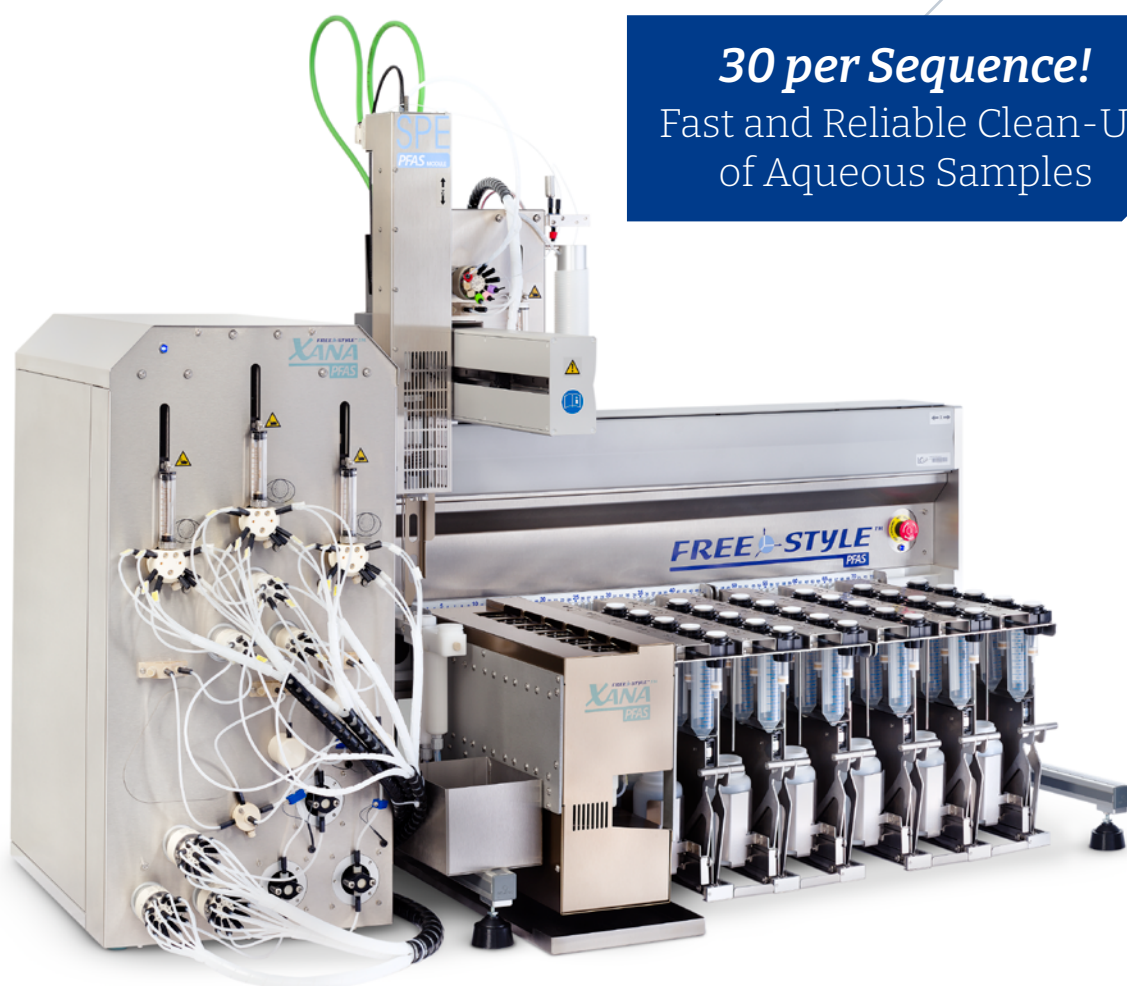


FREESTYLE XANA PFAS TableTop



30 per Sequence!

Fast and Reliable Clean-Up
of Aqueous Samples



**CHROMATOGRAPHIC
SPECIALTIES INC.**



1-800-267-8103 • www.chromspec.com • tech@chromspec.com





Fully automated preparation of aqueous samples for PFAS analysis

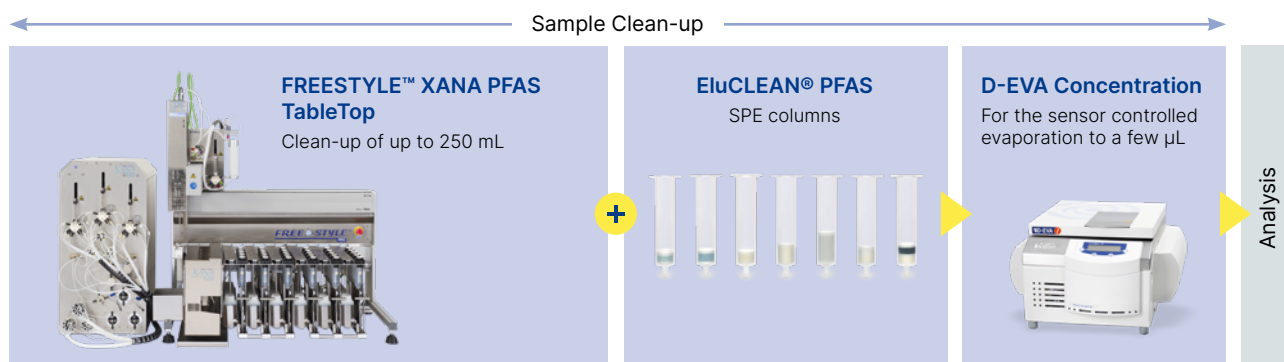


Introduction

The FREESTYLE XANA PFAS TableTop is well-prepared for PFAS-related requirements. Analytical challenges are overcome by replacing all PTFE-containing components with blind value-free materials like PE and PP. This enables method-compliant sample clean-up according to US EPA requirements (e.g., 537.1, 533, 1633) and DIN 38407-42 without generating any blind values.

Easy and cost-saving: Simply position the 250 ml bottles in the rack and you're ready to go. The robust device processes up to 30 samples in a sequence and 6 samples in parallel. The integrated pressure monitoring with non-stop policy ensures reliable and unattended runs, saving even more valuable laboratory time.

For Aqueous Samples



Technical Details / Highlights

Multifunctional Needle

Robust, double-walled needle with two independent lines. For the outer line, spray holes are arranged 360° around the needle. Ideal for thorough all-round cleaning of a vessel. Very effective spraying of solvent into sample bottles or for rinsing and cleaning.





Specifications FREESTYLE XANA PFAS TableTop

Max. volume per sample	up to 250 mL (dedicated bottles required*)
Samples per sequence	up to 30
Duration per sequence (depending on regulation and flow rate)	approx. 9 h (for US EPA 537.1)
Samples processed simultaneously	Up to 6
Location	On laboratory bench
Fume hood	Not required
PFAS compatibility	PE tubings, PTFE-free syringe, PTFE-free valves
Solvent compatibility	all necessary solvents according to the regulations are compatible

*Thermo/Nalgene; P/N: 2104-0008

Throughput External Working Station

- The fluidic path of the sample is PTFE-free to comply with all PFAS-related methods
- Loading of 3 samples in parallel with flow rates: 1 - 30 mL/min
- Time-consuming processes (loading & drying) in parallel, to save costs & time
- 8 solvent ports for conditioning, rinsing and washing. Additional 6 solvent ports for elution available
- Detection of empty bottles via sensors
- Automated rinsing of system at the end of a sequence
- Overpressure monitoring with intelligent error management



Easy to Handle Bottle Rack



User friendly loading of bottle rack



Easily lifted by hand



Bottles in ready-to-use position

Principle of operation

Parallel loading and overlapping process on the workstation on the FREESTYLE platform:

- Processes 2×3 samples parallel
- Closes these 6 columns pressure-tight
 - Loads 3 columns parallel
 - Dries 3 columns parallel
- With central discharge and waste-separation valve



Assignment of LCTech Systems and Columns to the Official Standards

Properties	EPA 537.1	EPA 533	EPA DRAFT 1633	DoD QSM / 537M	ISO 21675-2019		
Matrix	Drinking water	Drinking water	Non-drinking water; solids; biota	Non-drinking water; solids; biota	Drinking water; neutral water, waste-water (<2 g/L SPM)	Food & feed; drinking water; aqueous and solid environmental samples	Highly pigmented food & feed; highly colored environmental samples
Compounds	18	25	40	25	14	≥ 40	≥ 40
SPE - columns	EluCLEAR® PFAS SDVB	EluCLEAR® PFAS WAX	EluCLEAR® PFAS WAX/ GCB	EluCLEAR® PFAS WAX/ GCB	EluCLEAR® PFAS WAX	EluCLEAR® PFAS Universal	EluCLEAR® PFAS Universal HP

Ordering Information

P/N	Description
20600	FREESTYLE XANA-PFAS TableTop, without EVA for 250 mL NALGENE bottles (FISHER p/n 2104-0008/not included), consists of BASIC-system with SPE- and XANA-module and racks for up to 30 samples in sequence
19372	Adapter set for 6 mL SPE cartridges for US EPA 537.1 (12 pcs)
14923-PFAS	Caps for SPE-cartridges, 6 mL, Type LCTech and WATERS OASIS 25 pcs/pck., for PFAS-application; reusable

LCTech columns esp. for PFAS-application:

P/N	Description	PCS
-----	-------------	-----

Enrichment of PFAS from drinking water, US EPA 537.1

20801	EluCLEAR® PFAS – SDVB	30 pcs
20802	EluCLEAR® PFAS – SDVB	100 pcs
20803	EluCLEAR® PFAS – SDVB	500 pcs
20804	EluCLEAR® PFAS – SDVB / only for DEMO	10 pcs

Enrichment of PFAS from drinking water, US EPA 533, ISO 21675:2019, ISO 25101, DIN 38407-42

20811	EluCLEAR® PFAS – WAX, 500 mg	30 pcs
20812	EluCLEAR® PFAS – WAX, 500 mg	100 pcs
20813	EluCLEAR® PFAS – WAX, 500 mg	500 pcs
20814	EluCLEAR® PFAS – WAX, 500 mg / only for DEMO	10 pcs

Enrichment of PFAS from drinking water, US EPA 533, ISO 21675:2019, ISO 25101, DIN 38407-42

20871	EluCLEAR® PFAS – WAX, 200 mg	30 pcs
20872	EluCLEAR® PFAS – WAX, 200 mg	100 pcs
20873	EluCLEAR® PFAS – WAX, 200 mg	500 pcs
20874	EluCLEAR® PFAS – WAX, 200 mg / only for DEMO	10 pcs

P/N	Description	PCS
-----	-------------	-----

Enrichment of PFAS Aqueous and Solid Environmental Samples, US EPA 1633 (3rd Draft), DIN 38414-14, DIN 38407-42, ISO 21675:2019

20821	EluCLEAR® PFAS – WAX/GCB, 150/10 mg	30 pcs
20822	EluCLEAR® PFAS – WAX/GCB, 150/10 mg	100 pcs
20823	EluCLEAR® PFAS – WAX/GCB, 150/10 mg	500 pcs
20824	EluCLEAR® PFAS – WAX/GCB 150/10 mg / only for DEMO	10 pcs

Enrichment of PFAS Aqueous and Solid Environmental Samples with higher Matrix Load, DoD und DoE QSM 5.1/5.3, US EPA1633 (3rd Draft),DIN 38414-14, DIN38407-42, ISO21675:201

20831	EluCLEAR® PFAS –WAX/GCB, 200/50 mg	30 pcs
20832	EluCLEAR® PFAS –WAX/GCB, 200/50 mg	100 pcs
20833	EluCLEAR® PFAS – WAX/GCB, 200/50 mg	500 pcs
20834	EluCLEAR® PFAS – WAX/GCB, 200/50 mg / only for DEMO	10 pcs

**Do you have any questions?
Get in touch with the LCTech experts!**



LCTech GmbH
Daimlerstr. 4

84419 Obertaufkirchen, Germany
Tel. +49 8082 2717-0

info@LCTech.de
www.LCTech.de