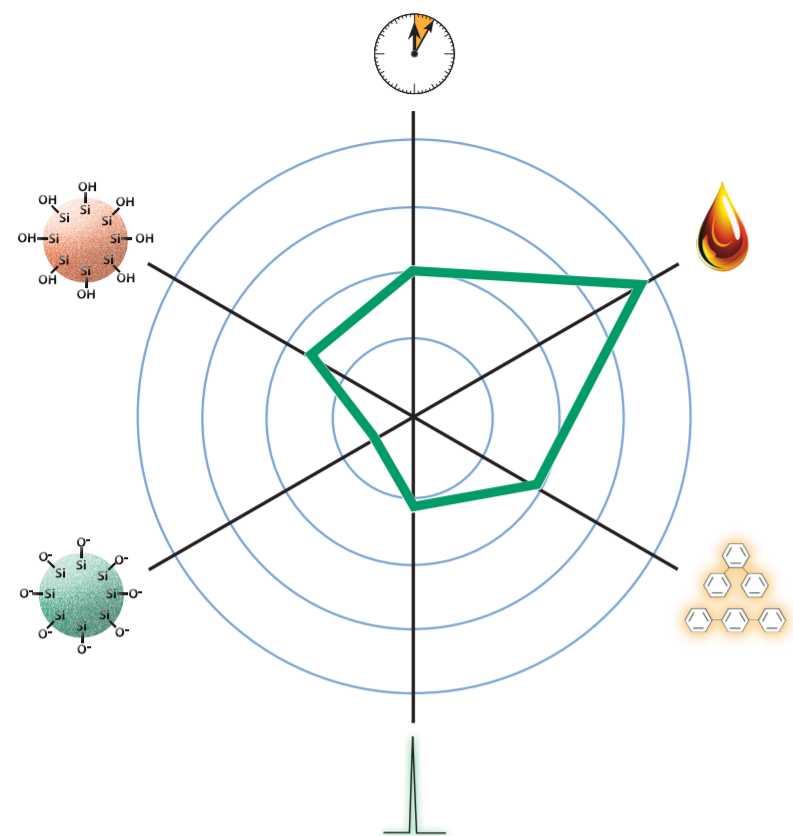


YMC-Pack Pro C18

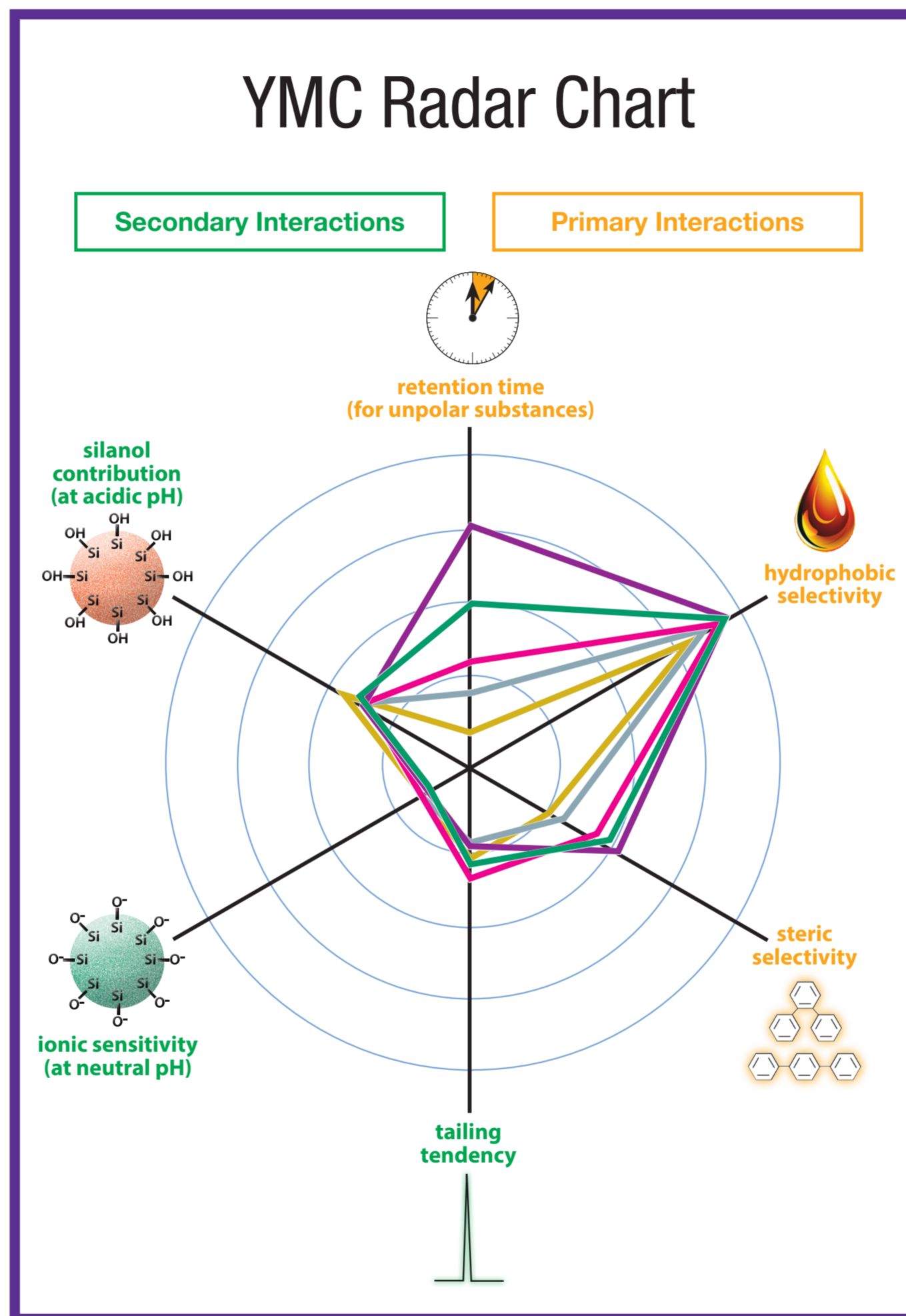


pH-stable 2–8
ideal for basic, acidic and polar compounds

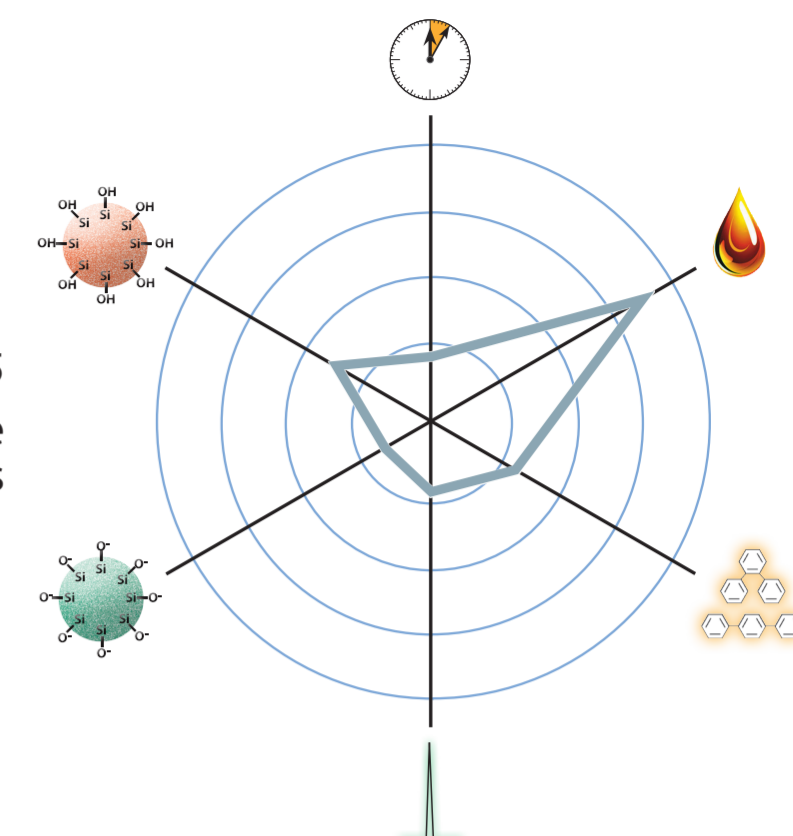
Easy ProFamily Column Selection

for Method Development

YMC Radar Chart

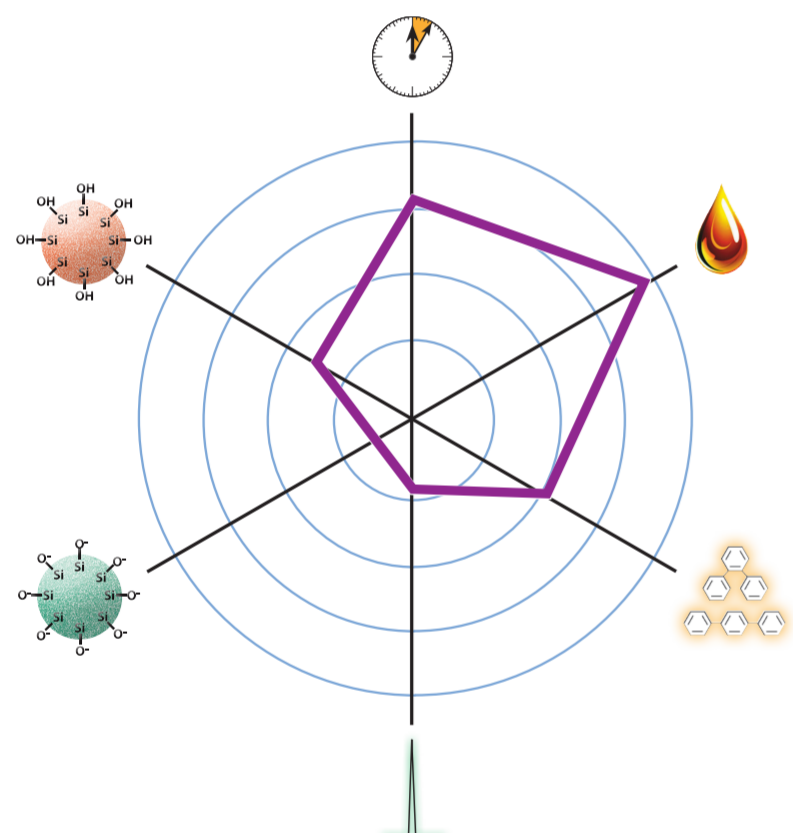


YMC-Pack Pro C8



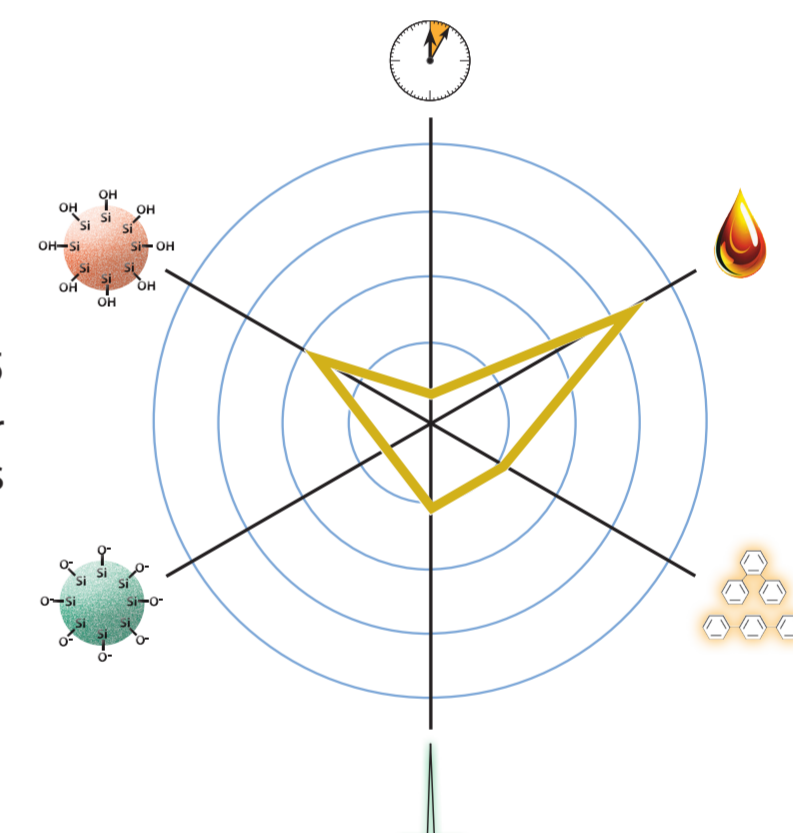
pH-stable 2.0–7.5
good alternative to C18 phases

YMC-Pack Pro C18 RS



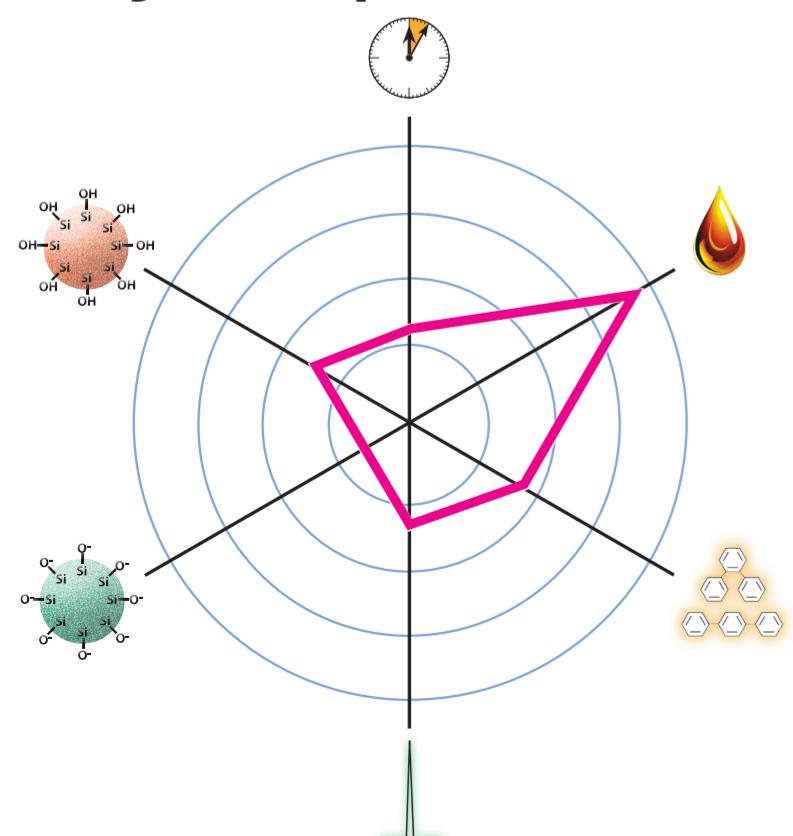
pH-stable 1–10
hydrophobic compounds
steric selectivity

YMC-Pack Pro C4



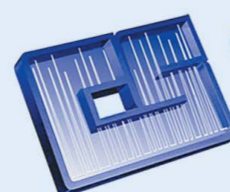
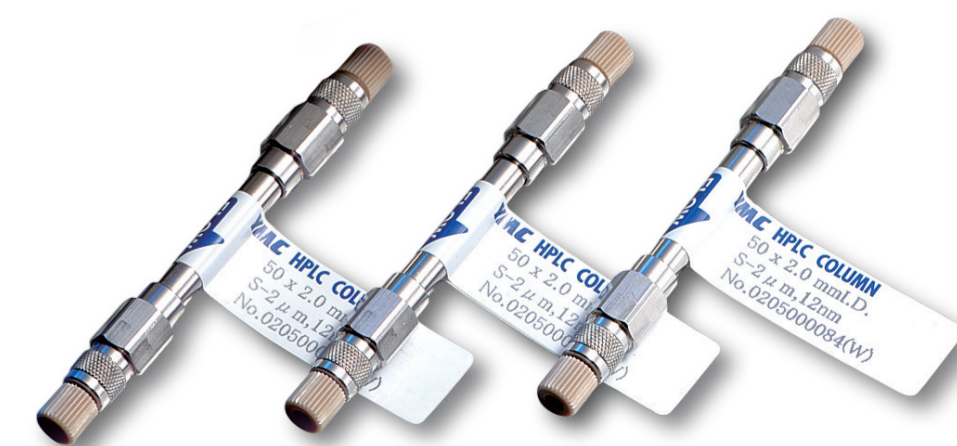
pH-stable 2.0–7.5
ideal for faster separations

Hydrosphere C18



pH-stable 2–8
also 100% aqueous eluents

Scan the QR code to view products.



CHROMATOGRAPHIC SPECIALTIES INC.

1-800-267-8103 • chromspec.com • tech@chromspec.com

YMC
America

ymcamerica.com