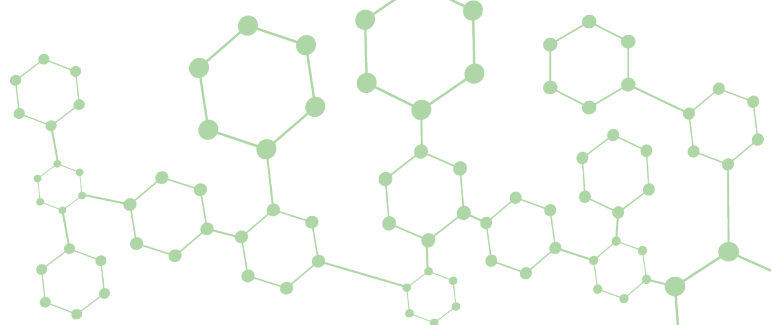


# CELERIS™ 2EP & 4EP

## Achiral SFC Columns



### High performance SFC separations at an affordable price

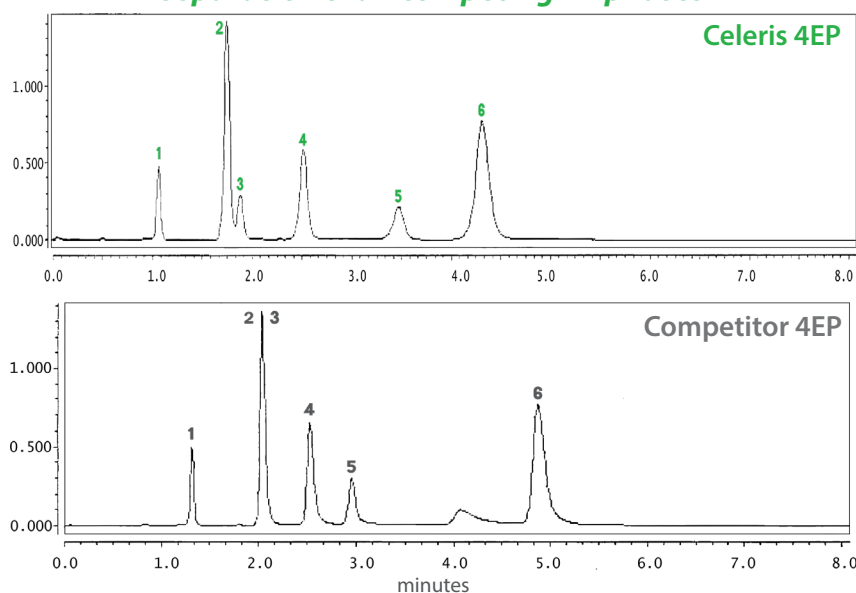
- Broad selectivity for achiral SFC separations
- High efficiency 5- and 10 µm phases
- Scalable from analytical to prep/process purifications
- Reproducible, long term performance
- Value priced to enable large-batch separations with fewer cycles



More chemists are discovering the benefits of supercritical fluid chromatography (SFC) as a greener alternative to HPLC separation of complex samples containing a range of different functional groups and polarities. SFC provides better resolution, faster separation, and higher sample throughput compared to HPLC. The Celeris™ family of achiral stationary phases has been specifically designed for SFC separations, delivering high capacity, broad selectivity, excellent peak shapes, and reproducible performance over long column lifetimes. Celeris high performance phases provide rapid separation and recovery of purified components at a lower price than competitor offerings, enabling use of larger column sizes to reduce the number of purification cycles required to achieve purity of the batch.

Ethyl pyridine phases are the workhorse phases for preparative and process scale SFC purifications. Celeris 2EP (2-ethyl pyridine) and 4EP (4-ethyl pyridine) media is designed to be highly reproducible based on tight product specifications and low metal content. Celeris 2EP is especially well-suited for separation of acidic compounds and exhibits broad selectivity towards a variety of other compound types. The Celeris 4EP phase offers alternate selectivity to the 2EP phase. Celeris 2EP and 4EP SFC columns deliver high performance separations comparable to other ethyl pyridine phases at a much lower price.

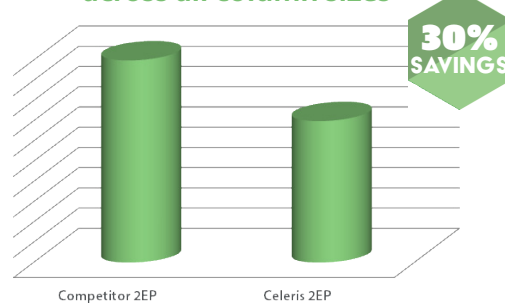
### Celeris ethyl pyridine phases provide similar or better separation than competing EP phases



1: Ibuprofen 2: Aspirin 3: Ketoprofen 4: Indomethacin 5: Diclofenac 6: Sulindac

Column Dimensions: 15 cm x 4.6 mm, 5 µm; Mobile Phase: CO<sub>2</sub>/CH<sub>3</sub>OH (80/20);  
Flow Rate: 3.20 mL/min; Temperature: 40° C; Pressure: 125 bar; Detection: UV 230 nm

### Average list price comparison across all column sizes



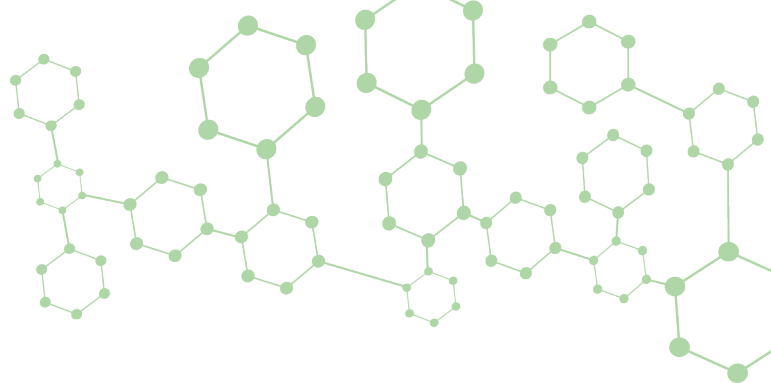
### Celeris™ Media Specifications

Pore Size:	100Å
Surface Area:	350 m <sup>2</sup> /g
Particle Sizes:	5 µm and 10 µm



# CELERIS™ 2EP & 4EP

## Achiral SFC Columns



### ORDERING INFORMATION

#### 5 µm

DIMENSIONS	2EP CATALOG #	4EP CATALOG #
5 cm x 2.1 mm	1-790317-300	1-790515-300
10 cm x 2.1 mm	1-790316-300	1-790514-300
15 cm x 2.1 mm	1-790306-300	1-790506-300
5 cm x 3 mm	1-790315-300	1-790513-300
10 cm x 3 mm	1-790313-300	1-790511-300
15 cm x 3 mm	1-790318-300	1-790516-300
5 cm x 4.6 mm	1-790314-300	1-790512-300
10 cm x 4.6 mm	1-790312-300	1-790510-300
15 cm x 4.6 mm	1-790305-300	1-790505-300
25 cm x 4.6 mm	1-790301-300	1-790501-300
25 cm x 10 mm	1-790302-300	1-790502-300
10 cm x 21.1 mm	1-790310-300	1-790517-300
15 cm x 21.1 mm	1-790309-300	1-790509-300
25 cm x 21.1 mm	1-790307-300	1-790507-300
15 cm x 30 mm	1-790308-300	1-790508-300
25 cm x 30 mm	1-790303-300	1-790503-300
15 cm x 50 mm	1-790311-300	1-790518-300
25 cm x 50 mm	1-790304-300	1-790504-300

#### 10 µm

DIMENSIONS	2EP CATALOG #	4EP CATALOG #
5 cm x 2.1 mm	1-790411-300	1-790613-300
5 cm x 4.6 mm	1-790412-300	1-790614-300
10 cm x 4.6 mm	1-790413-300	1-790615-300
15 cm x 4.6 mm	1-790401-300	1-790601-300
25 cm x 4.6 mm	1-790402-300	1-790602-300
15 cm x 10 mm	1-790414-300	1-790604-300
25 cm x 10 mm	1-790404-300	1-790606-300
15 cm x 21.1 mm	1-790403-300	1-790605-300
25 cm x 21.1 mm	1-790405-300	1-790607-300
50 cm x 21.1 mm	1-790406-300	1-790608-300
25 cm x 30 mm	1-790407-300	1-790609-300
50 cm x 30 mm	1-790410-300	1-790612-300
25 cm x 50 mm	1-790408-300	1-790610-300
50 cm x 50 mm	1-790409-300	1-790611-300

Other sizes available upon request.



See how much you can save using Celeris™ columns and media.  
Request a quote today.



#### ABOUT REGIS TECHNOLOGIES, INC.

Regis Technologies, Inc. is a privately held company that provides synthesis and separations services to the pharmaceutical, biotechnology and other related industries. Regis provides innovative chromatography products and services, especially those with a chiral emphasis, through the utilization of our extensive organic expertise and collegiate collaborations. For more information, please visit [www.registech.com](http://www.registech.com).

t 847.967.6000  
f 847.967.5876

[www.registech.com](http://www.registech.com)

[chromsales@registech.com](mailto:chromsales@registech.com)

8210 Austin Avenue  
Morton Grove, IL US 60053