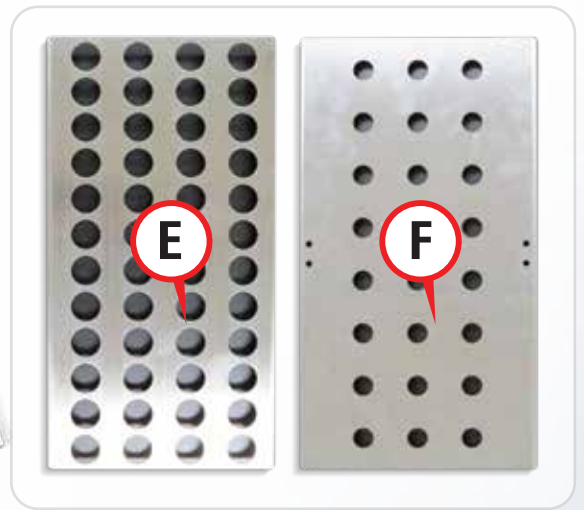
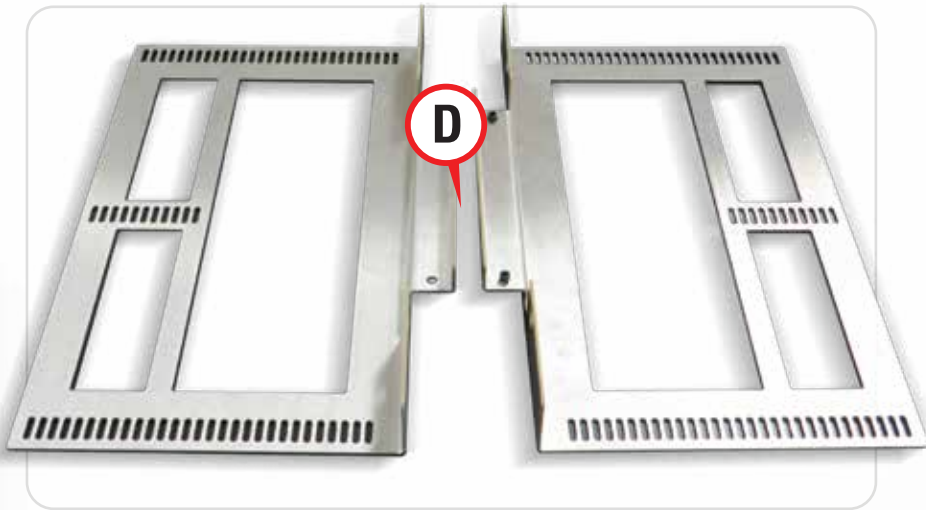
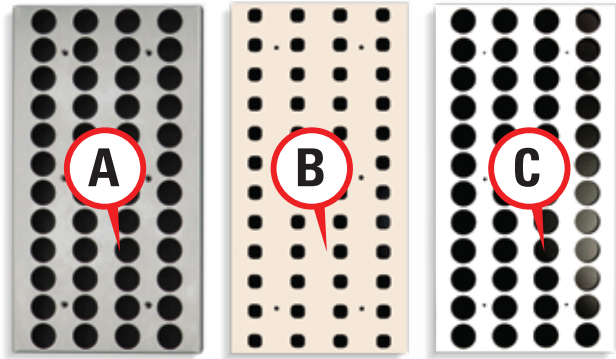


TRAY ASSEMBLY PARTS

SPeVAP[®] Multi-Function Solvent Evaporator

1

- A Tray Top
- B Rubber Gasket
- C Gasket Brace
- D Tray Sides
- E Tray Tube Guide (Middle Row)
- F Tray Bottom



TRAY ASSEMBLY AND ADJUSTMENT

Take the gasket (B) for the desired vial size and lay on top of the gasket brace (C). Make sure to line up the small thru holes in the gasket with the threaded holes in the gasket brace. Take the sheet metal tray top (A) and set on top of the gasket and gasket brace.



Use the eight tray top screws and secure all three pieces together.

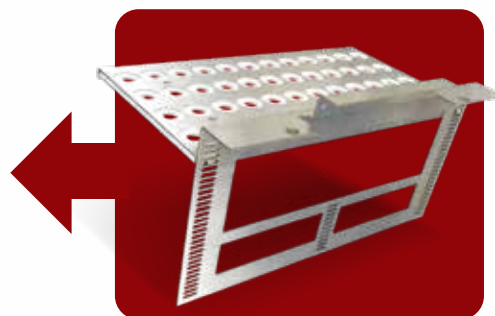


(Fig. 1)
Placement of tray gasket on tray brace (Left) and placement of tray top on gasket/brace. (Top)



Line up the holes on the side of the tray top (A) with the tray side (D). Using the side screws secure the tray top in place. Take the second tray side and repeat process on opposite side.

(Fig. 2) Tray sides attached to top tray assembly.



Caution: Alignment of tray guide with tray top is crucial to avoid less than optimal drying conditions (ie: skewed tube placement)



Install the tray tube guide (E) - to act as the tube guide. The guide is attached in the same manner as the tray top. Vertical placement will vary based on vial size.

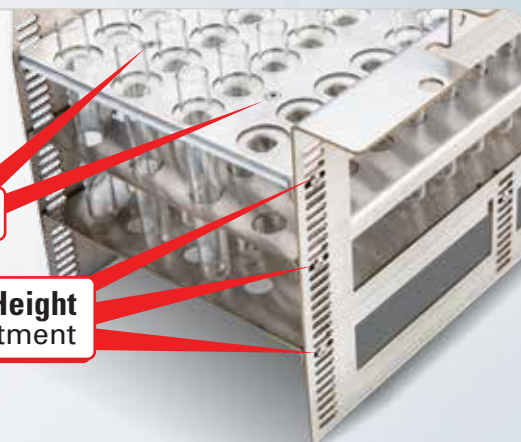
(Fig. 3) Tray guide attachment to assembly of tray sides and top

NOTE: If using autosampler vials, omit the middle rack (E) in tray assembly. Attach the rack bottom (F) underneath the tray top (A) affixed with appropriate gasket. (12-13mm / autosampler vial gasket)

Adjust the tray bottom (F) to match the height and support needed for the selected sample tube.



(Fig. 4) Attachment of tray bottom to tray assembly



Tray Top Screws

Tube Height Adjustment

(Fig. 5) Positioning of tray top screws and tube height adjustment holes