

CDS-7300 Purge & Trap Water Autosampler

CDS Model 7300 Purge & Trap Autosampler

- ▶ Waters only
- ▶ Methods 624, 524 and 8260 (waters) compliant
- ▶ 72 positions
- ▶ Great reproducibility
- ▶ Competitively priced

TECHNICAL SPECIFICATIONS

Water only AUTOSAMPLER

- 72 position autosampler, with removable sample trays for 40 ml VOA Vials, 3 trays of 24
- Internal Standard addition (2 µl)
- Water sample volumes are based on a sample loop (5 ml and 25 ml sample loops provided)
- Programmable rinses between runs
- Programmable blank analyses
- Programmable replicate/triplicate analyses
- The chemically inert sample pathways are made of PEEK® or silica lined Stainless Steel
- Blank water rinse of the entire sample pathway (option for heated rinse to 90°C) before flushing sample pathways and the purge vessel. The number of rinses is user programmable
- Computer interface
- Optional Chiller Tray

CDS-7300 Purge & Trap Autosampler



Specifications

Tray Capacity:
72 sample vials, 40 mL
EPA VOC

Sample Volume:
based on sample loop

Operating Temperature:
15°C to 35°C

Relative Humidity:
10 to 90%

Line Voltage: 115 Vac
± 15%, 230 Vac ± 15%,
50/60 Hz ± 3 Hz

Autosampler Features

- ▶ Two-stage sample probe on rugged robotic arm
- ▶ 72 sample removable trays
- ▶ Internal standard reservoir
- ▶ Chemically inert sample pathway
- ▶ 5 ml and 25 ml sample loops (behind the autosampler)
- ▶ Removable pneumatics/plumbing tray (behind the autosampler)

CDS-7000 E Features

- ▶ 5 and 25 ml sample vessels
- ▶ Integrated GC and On-trap injection
- ▶ First Patented Foam Sensor
- ▶ Chemically inert sample pathway
- ▶ Exchangeable sample

CDS-7400 Purge & Trap Soil/Water Autosampler

CDS Model 7400 Purge & Trap Autosampler

- ▶ Soil and Water
- ▶ EPA Method 624, SW846 Method 8260 compliant
- ▶ EPA Method SW846 5035 compliant
- ▶ 72 positions– Soil or Water Modes by Tray
- ▶ Great reproducibility
- ▶ Competitively priced

www.cdsanalytical.com

TECHNICAL SPECIFICATIONS

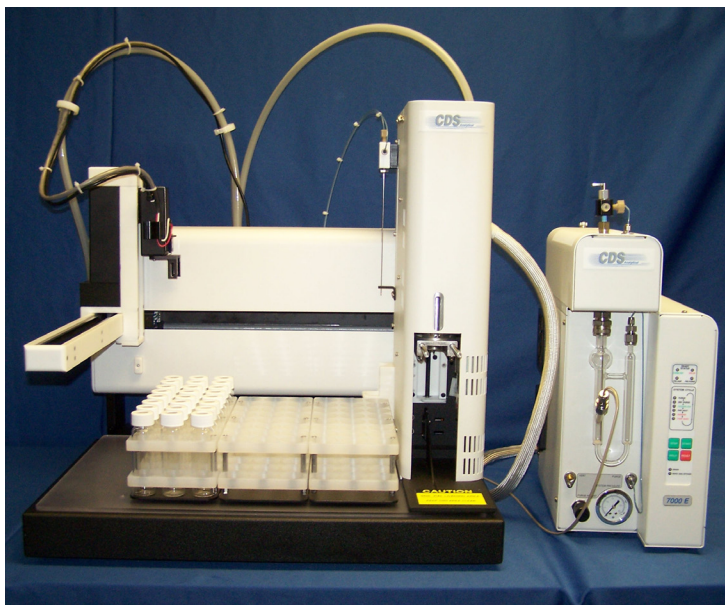
Soil/Water AUTOSAMPLER

Soil Mode:

- 72 position autosampler, with removable sample trays for 40 ml VOA Vials, 3 trays of 24
- Internal Standard addition (2 µl) (soil samples require water addition)
- Automated water addition in 5 ml aliquots (requires 5 ml sample loop)
- Soil heater to 80°C
- Magnetic stirrer (3 speed control)
- The chemically inert sample pathways are made of PEEK®, Stainless Steel, glass, or electroformed nickel
- Computer interface
- Ability to change analysis matrix from tray to tray (manual or automatic options)

Water Mode: Same as Model 7300

CDS-7400 Purge & Trap Autosampler



Specifications

Tray Capacity:
72 sample vials, 40 mL
EPA VOC

Sample Weight:
as per method

Sample Volume:
based on sample loop

Operating Temperature:
15°C to 35°C

Relative Humidity:
10 to 90%

Line Voltage: 115 Vac
± 15%, 230 Vac ± 15%,
50/60 Hz ± 3 Hz

Autosampler Features

- ▶ Pick and Place robotic arm
- ▶ 3 removable trays (72 sample)
- ▶ Water Station– for transfer of water to Purge and Trap
- ▶ Soil Mode– includes sample heating and stirring for dynamic headspace
- ▶ Internal standard reservoir
- ▶ Chemically inert sample pathway
- ▶ 5 ml water addition loop (behind the
- ▶ Removable pneumatics/plumbing tray (behind the autosampler)