

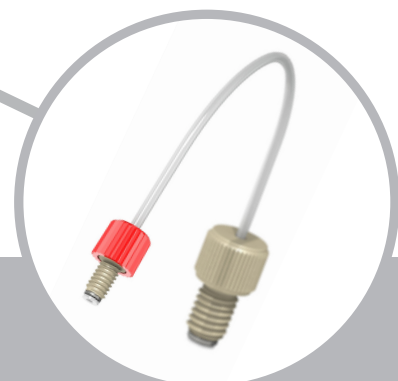
Dibafit



Connection Systems

Quick, Easy & Secure

Fittings | Custom Tubing Assemblies | Ferrules | Connectors | Adaptors



 Diba



**CHROMATOGRAPHIC
SPECIALTIES INC.**

1-800-267-8103 • www.chromspec.com • tech@chromspec.com



About Diba Industries

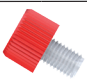




Diba Industries, Inc. was founded in 1986 in Mahopac, NY; but our roots in fluidics design go back to the Research and Advanced System Development Groups at Technicon Instruments Corporation in the early 1960's. Diba initially produced complete inert fluid transfer subassemblies, specialty components and tubing assemblies for the diagnostics marketplace. Diba moved to Danbury, CT in 1994 and was acquired by Halma PLC in 2004.

Since 2004 Diba has concentrated on expanding our product offerings through innovation and acquisition. For example, in 2006 we launched the first Click-N-Seal® fitting, which has now grown to include an entire line of fittings in a range of sizes and polymers. We have expanded our global presence in Europe with the acquisition of the Omnifit facility in Cambridge, UK and in Asia with the development of Halma Fluid Technology Shanghai (HFT). As a member of the Halma group of companies, Diba has the stability of a large company with the agility and responsiveness of a small one.

How to use: The Fitting Selection Guide

- Start in the left hand column and select the tube size you wish to use.
- Then, select the pressure rating you require.
- Choose the ferrule type based on wetted material choice or other preference.
- Then, go across the chart until you find a fitting that is complementary to the ferrule type. Choose the fitting based on: material, function, thread and style.
- Details and descriptions of the various ferrule types are found on pages 5 and 6. Descriptions of the different fittings are found on the page number listed below the image.

FITTING SELECTION GUIDE (THE X AT THE END OF A PART NUMBER INDICATES THE PART IS SOLD IN MULTIPLE COLORS)

TUBING OD	PRESSURE RATING	FERRULE TYPE	WETTED MATERIAL	CLICK-N-SEAL®		CLICK-N-SEAL® PLUS		CLICK-N-SEAL® ULTRA	CLICK-N-SEAL® MICRO	CLICK-N-SEAL® ULTRA MICRO
										
				pg. 8		pg. 9		pg. 10	pg. 10	
				1/4"28	M6	1/4"28	M6	1/4"28	6-40	
1/8"	1,000	Type P: SS case	PTFE	008NF32-CS5x	008NF32-CS6x	008NF32-AT5H	008NF32-AT6H	008NF32-KT5L		
		Gripper: SS case	PTFE							
	600	Type P: PEEK™	PTFE	008NF32-CS5x	008NF32-CS6x	008NF32-AT5H	008NF32-AT6H	008NF32-KT5L		
		Gripper: PEEK™								
	500	Type S: PEEK™	PEEK™	008NF32-CS5x	008NF32-CS6x	008NF32-AT5H	008NF32-AT6H	008NF32-KT5L		
		Type S: ETFE	ETFE	008NF32-CS5x	008NF32-CS6x	008NF32-AT5H	008NC32-AT6H	008NF32-KT5L		
	250	Inverted Cone	ETFE	008NC32-CS5x	008NC32-CS6x	008NC32-AT5H	008NC32-AT6H	008NC32-KT5L		
1/16"	2,000	Independent								008NF16-KT9x
	1,000	Type P: SS case	PTFE	008NF16-CS5x	008NF16-CS6x	008NF16-AT5H	008NF16-AT6H	008NF16-KT5L		
		Gripper: SS case	PTFE							
	800	Type P: PEEK™	PTFE	008NF16-CS5x	008NF16-CS6x	008NF16-AT5H	008NF16-AT6H	008NF16-KT5L		
		Gripper: PEEK™								
	500	Type S: PEEK™	PEEK™	008NF16-CS5x	008NF16-CS6x	008NF16-AT5H	008NF16-AT6H	008NF16-KT5L		
		Type S: ETFE	ETFE	008NF16-CS5x	008NF16-CS6x	008NF16-AT5H	008NF16-AT6H	008NF16-KT5L		
	250	Inverted Cone	ETFE	008NC16-CS5x	008NC16-CS6x	008NC16-AT5H	008NC16-AT6H	008NC16-KT5L		
	100	?	?							
	50	Flared	PTFE, FEP, LDPE, PEEK™						008NF16-KT9x	
3/16"	200	Type P: 3/16"	ETFE							
		Type S: 3/16"	PEEK™							
		Type S: 3/16"	ETFE							
		Inverted Cone: 3/16"	ETFE							

Contents

3-4 Ferrule System Description

An in depth description of the varying ferrule types Diba offers, to guide customers in choosing the best option to fit their connection needs.

5-14 Fitting Options & Information

Click-N-Seal® Fittings

This section includes both an overview and ordering information. This fitting group gaurentees the correct torque is reached everytime, thanks to Diba's design of the finger-tight system.

Omni-Lok™ Fittings

Overview of the different fitting types in this family. Omni-Lok™ fittings have no recess in the threaded end which increases thread engagment, ensuring a reliable connection everytime.

PEEK™ Fittings


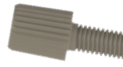




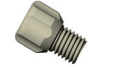
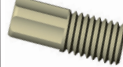
PEEK™ Fittings are optimal for higher temperature connections. This section goes in depth with a variety of fittings, so customers are sure to find something for their needs.

15-18 Ferrule Options & Information

This section provides product numbers and descriptions, along with detailed measurments of the different fer- rules systems that Diba Industries offer.

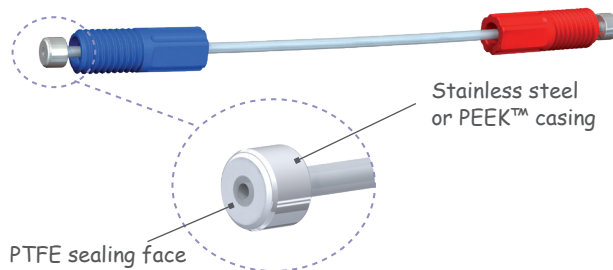
19-26 Alternate Connectors

These pages offer multiple different barbed adaptors, along with alternative connecting solutions. These con- nection options include: unions, in-line connectors, mountable block connectors and assembly tools. Solvent and waste bottlecaps are also included in this section from pages 24-26.

CLICK-N-SEAL® CONICAL TIP CLICK-N-SEAL®	CLICK-N-SEAL® FLAT BOTTOM	OMNI-LOK HEADLESS	OMNI-LOK HEADLESS 3/16"	WIDE HEAD	OMNI-LOK LONG	PEEK™	PEEK™ HEADLESS
							
pg. 10 10-32	pg. 9 10-32	pg. 11 1/4" x 28 M6	pg. 12 3/16" x 24	pg. 12 1/4" x 28	pg. 12 1/4" x 28	pg. 13 1/4" x 28 M6	pg. 13 1/4" x 28
		008NF32-YC5x	008NF32-YC6x		008NF32-YL5B	002222S	
				00220x & 002230		002222	002235
		008NF32-YC5x	008NF32-YC6x		008NF32-YL5B	002222S	
				00220x & 002230		002222	002235
		008NF32-YC5x	008NF32-YC6x		008NF32-YL5B	002222S	
		008NF32-YC5x	008NF32-YC6x		008NF32-YL5B	002222S	
		008NC32-YC5x	008NC32-YC6U	008NC32-YA5U		002244S & 002244	002145
008NT16-KT4L							
		008NF16-YC5x	008NF16-YC6B		008NF16-YL5B	002122S	
				00210x & 002130		002122	002135
		008NF16-YC5x	008NF16-YC6B		008NF16-YL5B	002122S	
				00210x & 002130		002122	002135
		008NF16-YC5x	008NF16-YC6B		008NF16-YL5B	002122S	
		008NF16-YC5x	008NF16-YC6B		008NF16-YL5B	002122S	
		008NC16-YC5x	008NC16-YC6U	008NC16-YA5U		002144S & 002144	002245
	008NF16-KT4L						
KT9x							
			008NF47-YC7B				
			008NF47-YC7B				
			008NF47-YC7B				
			008NC47-YC7B				

Dibafit™ Type P Ferrule System

The Dibafit™ Type P fitting system uses a one-piece ferrule which fits permanently onto the outside of semi-rigid tubing. Ferrules have an inner PTFE sealing face ensuring that only PTFE is in the fluid path. The outer casing is stainless steel or PEEK™. The fitting can spin freely, eliminating tubing twist. A recess in the fitting houses the ferrule, allowing maximum thread engagement with the port. This ensures the system stays sealed up to 1000 psi (69 bar) pressure, even in shallow PTFE ports.

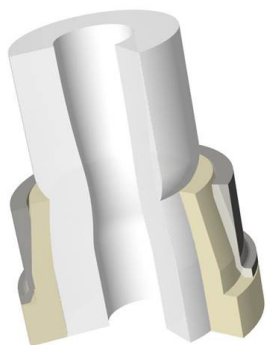
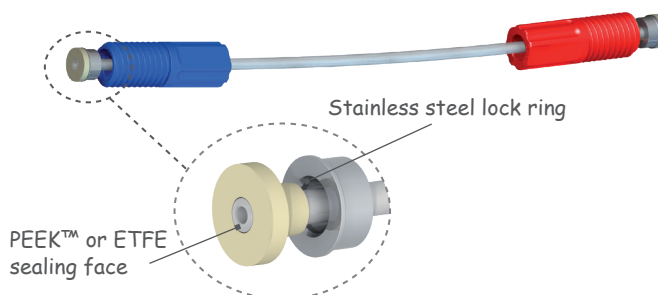


Chemically inert flangeless fitting with permanently attached PTFE ferrule ideal for repeat connect/disconnect

- Pressure rated up to 1000 psi (69 bar)
- For 1/16", 1/8" or 3/16" OD semi-rigid tubing e.g. PTFE, ETFE, FEP
- For flat-bottom 1/4"-28 UNF, M6 or 5/16"-24 UNF ports
- Use with Omni-Lok™ compact head or Click-N-Seal® self-torquing fittings.

Dibafit™ Type S Ferrule System

The Dibafit™ Type S fitting system uses a two-piece ferrule which fits permanently to the outside of the tubing. Two-part ferrules consist of an inner PEEK™ or ETFE sealing surface surrounded by a stainless steel lock ring with only the inner portion in the fluid path. The fitting can spin freely, eliminating tubing twist. A recess in the fitting houses the ferrule, allowing maximum thread engagement with the port. This ensures the system stays sealed up to 500 psi (34 bar) pressure, even in shallow PTFE ports.

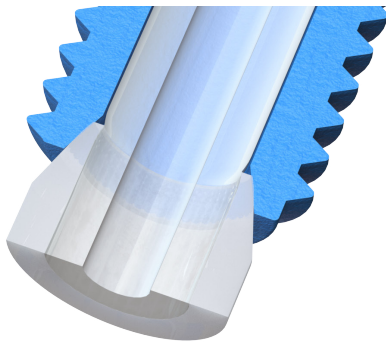
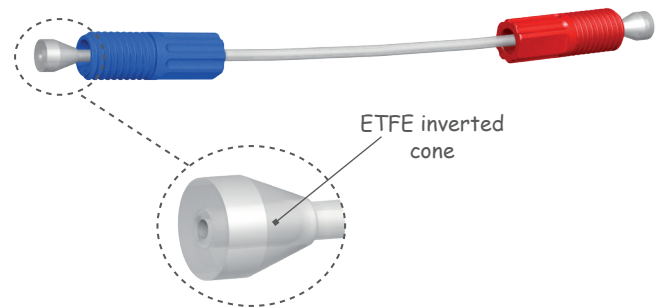


Chemically inert with permanently attached PEEK™ or ETFE ferrules, ideal for repeated connect/disconnect

- Pressure rated up to 500 psi (34 bar) or more
- For 1/16", 1/8" or 3/16" OD semi-rigid tubing e.g. PTFE, ETFE, FEP
- For flat-bottom 1/4"-28 UNF, M6 or 5/16"-24 UNF ports, and taper/ flat-bottom 6-40 ports

Dibafit™ Inverted Cone System

Omni-Lok™ inverted cones provide a simple, easy to use low-pressure connection. Only the ETFE cone is in the fluid path. No tools are required to assemble a flangeless fitting quickly and economically - just slip the fitting and the ETFE cone over the tubing and screw into the port. None of the parts are permanently attached to the tubing. A recess in the fitting houses the inverted cone, allowing maximum thread engagement with the port ensuring the system stays sealed up to 250 psi (17 bar) pressure even in shallow PTFE ports.



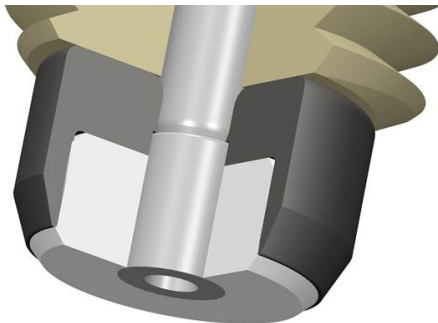
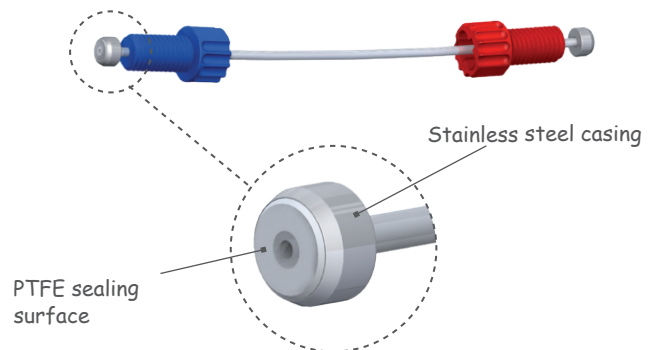
Great for quick and convenient low-pressure connections

- Pressure rated up to 250 psi (17 bar)
- For 1/16", 1/8" or 3/16" OD and metric sizes 2.0, 2.5 or 3.0mm OD semi-rigid tubing e.g. PTFE, ETFE, FEP
- For flat-bottom 1/4"-28 UNF, M6 or 5/16"-24 UNF ports
- Use with Omni-Lok™ compact head or Click-N-Seal® self-torquing fittings.

Dibafit™ Gripper Fitting System

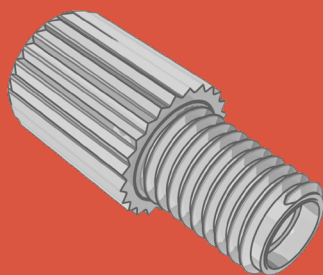
The Dibafit™ Gripper fitting system uses a one-piece ferrule which fits permanently onto the outside of semi-rigid tubing. Ferrules have an inner PTFE sealing face ensuring that only PTFE is in the fluid path. The outer casing is stainless steel or PEEK™. The fitting can spin freely, eliminating tubing twist and allowing easy repeat connect/disconnect. The system is pressure rated up to 1000 psi (69 bar).

PEEK™ fittings for use in higher temperatures are available in standard or compact head styles and with 1/4"-28 UNF, M6 or 10-32 threads.



Chemically inert flangeless fitting with permanently attached PTFE ferrule ideal for repeat connect/disconnect

- Pressure rated up to 1000 psi (69 bar)
- For 1/16" or 1/8" OD semi-rigid tubing
- For 1/4"-28 UNF or M6 flat-bottom ports

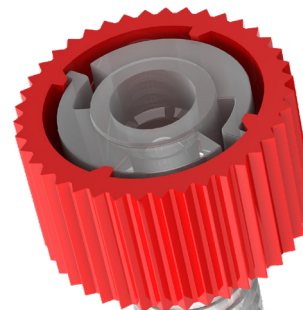


Fitting Description

Click-N-Seal® Self-Torquing Fittings

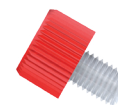
Click-N-Seal® offers a unique system for hand-tight fittings. As the fitting is tightened, the resistance of the cap increases until the correct torque is reached at which point the cap clicks. The user is able to hand-tighten the fittings without tools or guesswork and be confident that the fitting is properly sealed. The Click-N-Seal® family of connectors are available in polycarbonate, Acetal and PEEK™ and accommodate flares, ferrules and barbs. This fitting creates a secure seal without damaging the port through over-tightening. The fitting can be unscrewed and reused dozens of times.

Click-N-Seal® fittings – Standard, Plus and Ultra are compatible with Diba flares and any of the ferrule types, or with inverted cones. Simply select the ferrule system that offers the pressure rating you require and then pair the appropriate ferrule with a Click-N-Seal® Standard, Plus or Ultra fitting.



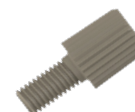
Click-N-Seal® Standard

Click-N-Seal® Standard is the fitting that began the system. For more details and ordering information please refer to page 7.



Click-N-Seal® Ultra

Click-N-Seal® Ultra combines the unique torque-control of Click-N-Seal® with a compact head design and chemically inert PEEK™ construction. For more details and ordering information please refer to page 9.



Click-N-Seal® Plus

Click-N-Seal® Plus offers a compact head design made of Acetal. For more details and ordering information please refer to page 8.

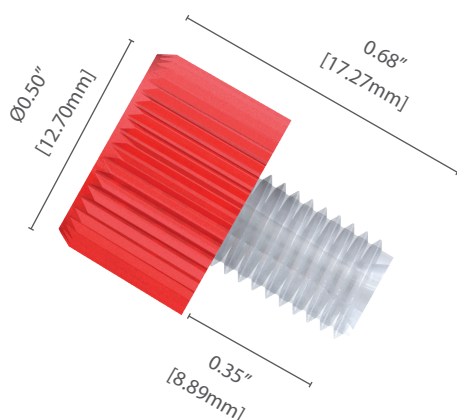


Click-N-Seal® fittings for flared tubing provide a seal with only the tube material in the fluid path.

Click-N-Seal® Standard Fittings

Click-N-Seal® Standard finger tight fittings are the most popular offering in this family. The unique system ensures the correct torque is reached with no guesswork. Click-N-Seal® Standard fittings are available in PC. An o-ring may also be necessary to ensure the fitting seats correctly in deeper ports in which case add a second washer. We recommend the use of a washer to ensure a correct seal. When paired with our flared tubing, Click-N-Seal® enables a ferrule free connection.

Whichever Click-N-Seal® system you choose, the result is a fitting system offering the best pressure and chemical compatibility for your application, plus the security of a fitting that is always tightened to the correct torque.



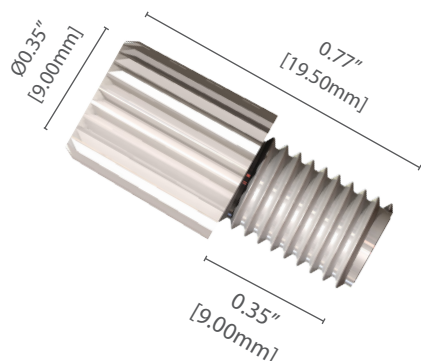
Ordering Note

Fittings listed with a "X" at the end of the product number are available in different colors. To order in a different color simply replace the "X" with the corresponding letter (found in the chart below).

Color			
Letter	B	H	R

1/16" FITTINGS FOR 1/8" OD TUBING (THE X AT THE END OF A PART NUMBER INDICATES THE PART IS SOLD IN MULTIPLE COLORS)								
PART NUMBER	THREAD	PRESSURE RATINGS (BASED ON FERRULE PAIRING)				FERRULE TYPE	MATERIAL	QTY
		TYPE P: SS CASE	TYPE P: PEEK™	TYPE S	INVERTED CONE			
008NF16-CS5X	1/4•28	1,000 psi (69 Bar)	800 psi (56 bar)	500 psi (34 bar)		Type P & Type S	PC	10-pk
008NC16-CS5X	1/4•28				250 psi (17 bar)	Inverted Cone	PC	10-pk
008NG16-CS5X	1/4•28	1,000 psi (69 Bar)	800 psi (56 bar)	500 psi (34 bar)	250 psi (17 bar)	Flared System	PC	10-pk
008NF16-CS6X	M6	1,000 psi (69 Bar)	800 psi (56 bar)	500 psi (34 bar)		Type P & Type S	PC	10-pk
008NC16-CS6X	M6				250 psi (17 bar)	Inverted Cone	PC	10-pk
008NG16-CS6X	M6	1,000 psi (69 Bar)	800 psi (56 bar)	500 psi (34 bar)	250 psi (17 bar)	Flared System	PC	10-pk
1/8" FITTINGS FOR 1/8" OD TUBING (THE X AT THE END OF A PART NUMBER INDICATES THE PART IS SOLD IN MULTIPLE COLORS)								
008NF32-CS5x	1/4•28	1,000 psi (69 bar)	600 psi (56 bar)	500 psi (34 bar)		Type P & Type S	PC	10-pk
008NC32-CS5x	1/4•28				250 psi (17 bar)	Inverted Cone	PC	10-pk
008NG32-CS5x	1/4•28	1,000 psi (69 bar)	600 psi (42 bar)	500 psi (34 bar)	250 psi (17 bar)	Flared System	PC	10-pk
008NF32-CS6x	M6	1,000 psi (69 bar)	600 psi (56 bar)	500 psi (34 bar)		Type P & Type S	PC	10-pk
008NC32-CS6x	M6				250 psi (17 bar)	Inverted Cone	PC	10-pk
008NG32-CS6x	M6	1,000 psi (69 bar)	600 psi (42 bar)	500 psi (34 bar)	250 psi (17 bar)	Flared System	PC	10-pk

Plus Fittings



Click-N-Seal® Plus offers a compact head design made of Acetal. Click-N-Seal® Plus fittings are compatible with any of the Dibafit™ ferrule types and with Dibafit™ inverted cones. All Plus fittings are available in white.

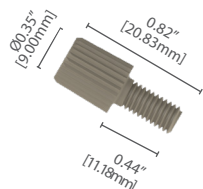
When you choose the Click-N-Seal® Plus, the result is a fitting system offering the best pressure and chemical compatibility for your application, plus the security of a fitting that is always tightened to the correct torque.

1/16" FITTINGS FOR 1/16" OD TUBING (THE X AT THE END OF A PART NUMBER INDICATES THE PART IS SOLD IN MULTIPLE COLORS)								
PART NUMBER	THREAD	PRESSURE RATINGS (BASED ON FERRULE PAIRING)				FERRULE TYPE	MATERIAL	QTY
		TYPE P: SS CASE	TYPE P: PEEK™	TYPE S	INVERTED CONE			
008NF16-AT5H	1/4•28	1,000 psi (69 Bar)	800 psi (56 bar)	500 psi (34 bar)		Type P & Type S	Acetal	10-pk
008NC16-AT5H	1/4•28				250 psi (17 bar)	Inverted Cone	Acetal	10-pk
008NG16-AT5H	1/4•28	1,000 psi (69 Bar)	800 psi (56 bar)	500 psi (34 bar)	250 psi (17 bar)	Flared System	Acetal	10-pk
008NF16-AT6H	M6	1,000 psi (69 Bar)	800 psi (56 bar)	500 psi (34 bar)		Type P & Type S	Acetal	10-pk
008NC16-AT6H	M6				250 psi (17 bar)	Inverted Cone	Acetal	10-pk
008NG16-AT6H	M6	1,000 psi (69 Bar)	800 psi (56 bar)	500 psi (34 bar)	250 psi (17 bar)	Flared System	Acetal	10-pk
1/8" FITTINGS FOR 1/8" OD TUBING (THE X AT THE END OF A PART NUMBER INDICATES THE PART IS SOLD IN MULTIPLE COLORS)								
008NF32-AT5H	1/4•28	1,000 psi (69 bar)	600 psi (56 bar)	500 psi (34 bar)		Type P & Type S	Acetal	10-pk
008NC32-AT5H	1/4•28				250 psi (17 bar)	Inverted Cone	Acetal	10-pk
008NG32-AT5H	1/4•28	1,000 psi (69 bar)	600 psi (42 bar)	500 psi (34 bar)	250 psi (17 bar)	Flared System	Acetal	10-pk
008NF32-AT6H	M6	1,000 psi (69 bar)	600 psi (56 bar)	500 psi (34 bar)		Type P & Type S	Acetal	10-pk
008NC32-AT6H	M6				250 psi (17 bar)	Inverted Cone	Acetal	10-pk
008NG32-AT6H	M6	1,000 psi (69 bar)	600 psi (42 bar)	500 psi (34 bar)	250 psi (17 bar)	Flared System	Acetal	10-pk

10-32 Flat Bottom Fittings

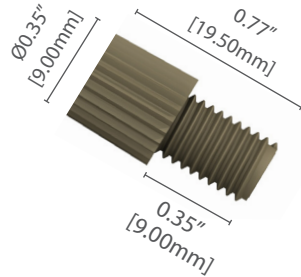
The 10-32 flat bottom Click-N-Seal® fitting solution is for quick and easy connection of 1/16" tubing into a 10-32 flat bottom port.

- Retains 1/16" OD PTFE and other semi-rigid tubing



1/16" FITTINGS FOR 1/16" OD TUBING					
PART NUMBER	THREAD	PRESSURE RATING	FERRULE TYPE	MATERIAL	QTY
008NF16-KT4L	10-32	100 psi (7 bar)	Flared System & Type S Conical	PEEK™	10-pk

Ultra Fittings



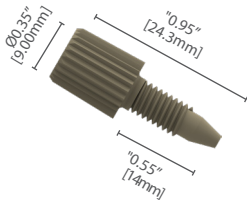
Click-N-Seal® Ultra combines the unique torque-control of Click-N-Seal® with a compact head design and robust PEEK™ construction. For enhanced chemical resistance and a space-savings design, Click-N-Seal® Ultra is the product of choice.

1/16" FITTINGS FOR 1/16" OD TUBING (THE X AT THE END OF A PART NUMBER INDICATES THE PART IS SOLD IN MULTIPLE COLORS)								
PART NUMBER	THREAD	PRESSURE RATINGS (BASED ON FERRULE PAIRING)				FERRULE TYPE	MATERIAL	QTY
		TYPE P: SS CASE	TYPE P: PEEK™	TYPE S	INVERTED CONE			
008NF16-KT5L	1/4•28	1,000 psi (69 Bar)	800 psi (56 bar)	500 psi (34 bar)		Type P & Type S	PEEK™	10-pk
008NC16-KT5L	1/4•28				250 psi (17 Bar)	Inverted Cone	PEEK™	10-pk
008NG16-KT5L	1/4•28	1,000 psi (69 Bar)	800 psi (56 bar)	500 psi (34 bar)	250 psi (17 Bar)	Flared System	PEEK™	10-pk
008NG16-KT4L	10-32	1,000 psi (69 Bar)	800 psi (56 bar)	500 psi (34 bar)	250 psi (17 Bar)	Flared System	PEEK™	10-pk
1/8" FITTINGS FOR 1/8" OD TUBING (THE X AT THE END OF A PART NUMBER INDICATES THE PART IS SOLD IN MULTIPLE COLORS)								
008NF32-KT5L	1/4•28	1,000 psi (69 bar)	600 psi (56 bar)	500 psi (34 bar)		Type P & Type S	PEEK™	10-pk
008NC32-KT5L	1/4•28				250 psi (17 bar)	Inverted Cone	PEEK™	10-pk
008NG32-KT5L	1/4•28	1,000 psi (69 bar)	600 psi (42 bar)	500 psi (34 bar)	250 psi (17 bar)	Flared System	PEEK™	10-pk

10-32 Cone-Tip Fittings

The 10-32 Cone-Tip fitting solution is for quick and easy connection of semi-rigid 1/16" tube into a 10-32 conical port.

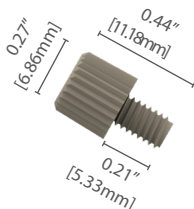
- For HPLC type ports
- Retains 1/16" OD PTFE, ETFE, FEP, PEEK™ and other semi-rigid tubing



1/16" FITTINGS FOR 1/16" OD TUBING					
PART NUMBER	THREAD	PRESSURE RATING	FERRULE TYPE	MATERIAL	QTY
08NT16-KT4L	10-32	2,000 psi (138 bar)	Works independently	PEEK™	10-pk

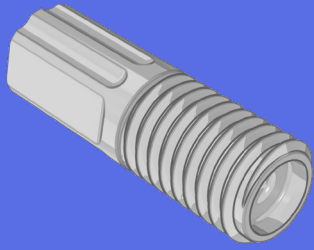
Micro 6-40 Fittings

The Diba Click-N-Seal® Micro 6-40 fitting, ferrule and flare solutions quickly and easily connect 1/16" tubing into 6-40 threaded ports, making them ideal for systems that require smaller fluid connections (can be used in any 6-40 port). They ensure leak-free connections without risk of over-tightening. For microfluidics applications



1/16" FITTINGS FOR 1/16" OD TUBING (THE X AT THE END OF A PART NUMBER INDICATES THE PART IS SOLD IN MULTIPLE COLORS)					
PART NUMBER	THREAD	PRESSURE RATING	FERRULE TYPE	MATERIAL	QTY
008NF16-KT9x	6-40	50 psi (3 bar)	Flared System	PEEK™	10-pk

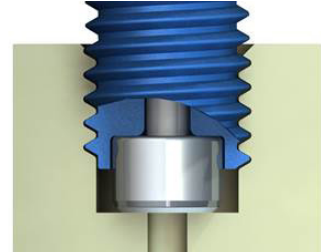
Omni-Lok™



Omni-Lok™ Fitting Description

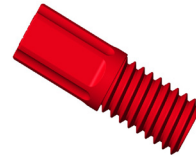
Omni-Lok™ Fittings

The Omni-Lok™ fitting system is a group of products specifically designed for optimum performance within a threaded port that is of a shallow depth, and/or is made from PTFE. This increase in thread engagement provides a more robust, reliable connection. This is achieved by a recess in the end of the fitting nut in which the gripper sits, allowing the nut to go further into the port.



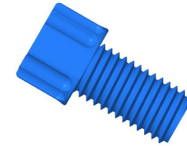
Omni-Lok™ Headless Fittings

Omni-Lok™ Standard fittings are slim to provide a reliable connection for almost any Omni-Lok connection system, used where space is limited.



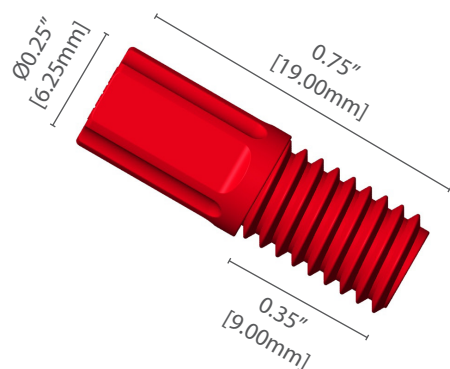
Omni-Lok™ Wide Head Fittings

Omni-Lok™ Wide Head fittings are created with an easy to grasp head for no slip torquing.



Omni-Lok™ Headless Fitting

The Omni-Lok™ fitting system is a group of products specifically designed for optimum performance within a threaded port that is of a shallow depth, and/or is made from PTFE. This increase in thread engagement provides a more robust, reliable connection. This is achieved by a recess in the end of the fitting nut in which the gripper sits, allowing the nut to go further into the port. The glass fiber filling and the textured surface finish also help to grip in the port.



Ordering Note

Fittings listed with a "X" at the end of the product number are available in different colors. To order in a different color simply replace the "X" with the corresponding letter (found in the chart below)

- Fittings 008NF16-YC5X and 008NF32-YC5X are available in: black, blue, gray, green, orange, red, white, yellow and mixed.
- Fittings 008NC16-YC5X and 008NC32-YC5X are available in: Blue and green.
- Fittings 008NC32-YC5X are available in: blue, green, orange, red and yellow.

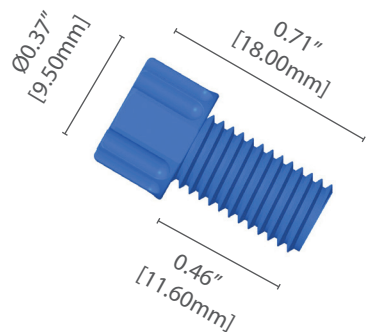
Color								
Letter	B	U	A	G	N	R	H	Y

1/16" FITTINGS FOR 1/16" OD TUBING (THE X AT THE END OF A PART NUMBER INDICATES THE PART IS SOLD IN MULTIPLE COLORS)

PART NUMBER	THREAD	PRESSURE RATINGS (BASED ON FERRULE PAIRING)				FERRULE TYPE	MATERIAL	QTY
		TYPE P: SS CASE	TYPE P: PEEK™	TYPE S	INVERTED CONE			
008NF16-YC5x	1/4•28	1,000 psi (69 bar)	800 psi (56 bar)	500 psi (34 bar)		Type P & Type S	PP	10-pk
008NC16-YC5X	1/4•28				250 psi (17 bar)	Inverted Cone	PP	10-pk
008NF16-YC6B	M6	1,000 psi (69 bar)	800 psi (56 bar)	500 psi (34 bar)		Type P & Type S	PP	10-pk
08NC16-YC6U	M6				250 psi (17 bar)	Inverted Cone	PP	10-pk
1/8" FITTINGS FOR 1/8" OD TUBING (THE X AT THE END OF A PART NUMBER INDICATES THE PART IS SOLD IN MULTIPLE COLORS)								
008NF32-YC5x	1/4•28	1,000 psi (69 bar)	600 psi (42 bar)	500 psi (34 bar)		Type P & Type S	PP	10-pk
008NC32-YC5X	1/4•28				250 psi (17 bar)	Inverted Cone	PP	10-pk
008NF32-YC6B	M6	1,000 psi (69 bar)	600 psi (42 bar)	500 psi (34 bar)		Type P & Type S	PP	10-pk
008NC32-YC6U	M6				250 psi (17 bar)	Inverted Cone	PP	10-pk

Wide Head Fitting

This chemically inert flangeless fitting with a permanently attached PTFE ferrule is ideal for repeat connect/disconnect. Some of these parts come in a variety of different colors, please contact local sales representative for more details on color options.



Ordering Note

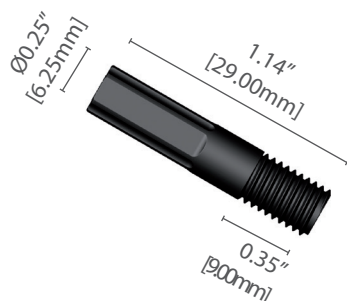
Fittings listed with a "X" at the end of the product number are available in different colors. To order in a different color simply replace the "X" with the corresponding number (found in the chart below).

Color											
Number	00	01	02	03	04	05	06	07	08	09	10

*Fittings 0021xx are available in: black, brown, red, orange, yellow, green, blue, violet, gray, white and mixed.

1/16" FITTINGS FOR 1/16" OD TUBING (THE X AT THE END OF A PART NUMBER INDICATES THE PART IS SOLD IN MULTIPLE COLORS)							
PART NUMBER	THREAD	PRESSURE RATINGS (BASED ON FERRULE PAIRING)			FERRULE TYPE	MATERIAL	QTY
		INVERTED CONE	SS CASE	PEEK™ CASE			
008NC16-YA5U	1/4•28	250 psi (17 bar)			Inverted Cone	PP	10-pk
0021XX	1/4•28		1,000 psi (69 bar)	800 psi (42 bar)	Gripper	PP	10-pk
002130	1/4•28		1,000 psi (69 bar)	800 psi (42 bar)	Gripper	ETFE	10-pk
1/8" FITTINGS FOR 1/8" OD TUBING (THE X AT THE END OF A PART NUMBER INDICATES THE PART IS SOLD IN MULTIPLE COLORS)							
008NC32-YA5U	1/4•28	250 psi (17 bar)			Inverted Cone	PP	10-pk
0022XX	1/4•28		1,000 psi (69 bar)	600 psi (42 bar)	Gripper	PP	10-pk
002230	1/4•28		1,000 psi (69 bar)	600 psi (42 bar)	Gripper	ETFE	10-pk

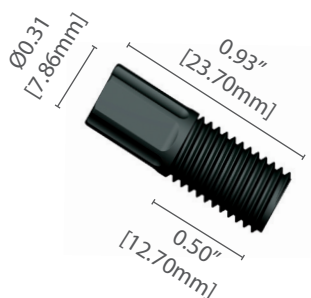
Long Fitting



Long head fittings allow easy installation in hard to reach places. It's more for close-packing of fittings where access to all short fittings would be difficult. This fitting increases thread engagement by a recess in the end of the fitting nut in which the gripper sits, allowing the nut to go further into the port. The glass fiber filling and the textured surface finish also help to grip in the port.

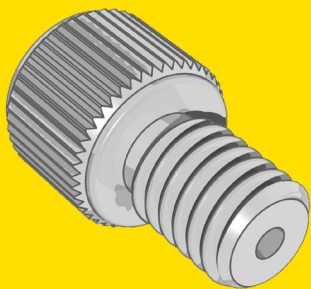
1/16" FITTINGS FOR 1/16" OD TUBING							
PART NUMBER	THREAD	PRESSURE RATINGS (BASED ON FERRULE PAIRING)			FERRULE TYPE	MATERIAL	QTY
		TYPE P: SS CASE	TYPE P: PEEK™	TYPE S			
008NF16-YLSB	1/4•28	1,000 psi (69 bar)	800 psi (56 bar)	500 psi (34 bar)	Type P & Type S	PP	10-pk
1/8" FITTINGS FOR 1/8" OD TUBING							
008NF32-YLSB	1/4•28	1,000 psi (69 bar)	600 psi (42 bar)	500 psi (34 bar)	Type P & Type S	PP	10-pk

Headless 3/16 Fitting



The Omni-Lok™ 3/16" fitting is similar to that of the Headless, but slightly smaller. Part 008NF47-YC7B is available in black and part 008NC47-YC7B are sold in blue. All part numbers listed below are sold in packs of 10.

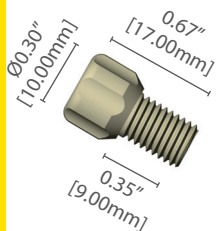
3/16" FITTINGS FOR 3/16" OD TUBING					
PART NUMBER	THREAD	PRESSURE RATINGS	PAIRED SYSTEM	MATERIAL	QTY
		(BASED ON PAIRING WITH TYPE P OR S FERRULE)			
008NF47-YC7B	3/16" 24	200 psi (14 bar)	Type P & Type S	PP	10-pk
008NC47-YC7B	3/16" 24	200 psi (14 bar)	Inverted Cone	PP	10-pk



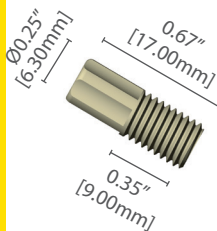
PEEK™ Fitting Description

PEEK™ Fittings

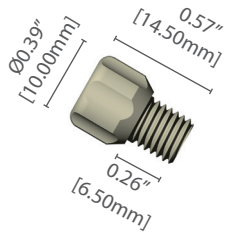
The Omni-Lok™ PEEK™ fitting system is a group of products specifically designed for optimum performance within a threaded port that is of a shallow depth. This increase in thread engagement provides a more robust, reliable connection. This is achieved by a recess in the end of the fitting nut in which the gripper sits, allowing the nut to go further into the port. The fittings are made with PEEK™ which makes them ideal for high temperatures.



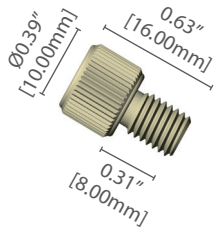
1/16" FITTINGS FOR 1/16" OD TUBING					
PART NUMBER	THREAD	PRESSURE RATINGS	FERRULE TYPE	MATERIAL	QTY
002144	1/4"•28	250 psi (17 bar)	Inverted Cone	PEEK™	10-pk
1/8" FITTINGS FOR 1/8" OD TUBING					
002244	1/4"•28	250 psi (17 bar)	Inverted Cone	PEEK™	10-pk



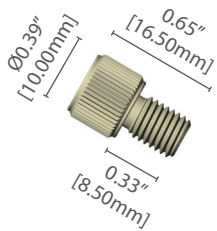
1/16" FITTINGS FOR 1/16" OD TUBING					
PART NUMBER	THREAD	PRESSURE RATINGS	FERRULE TYPE	MATERIAL	QTY
002145	1/4"•28	250 psi (17 bar)	Inverted Cone	PEEK™	10-pk
1/8" FITTINGS FOR 1/8" OD TUBING					
002245	1/4"•28, compact	250 psi (17 bar)	Inverted Cone	PEEK™	10-pk



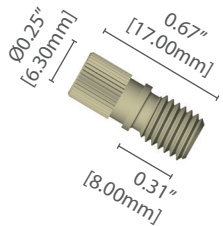
1/16" FITTINGS FOR 1/16" OD TUBING							
PART NUMBER	THREAD	PRESSURE RATINGS (BASED ON FERRULE PAIRING)			FERRULE TYPE	MATERIAL	QTY
		TYPE P: SS CASE	TYPE P: PEEK™	TYPE S			
002122S	1/4•28, short	1,000 psi (69 bar)	800 psi (56 bar)	500 psi (34 bar)	Type P & Type S	PEEK™	ea.
002144S	1/4•28	250 psi (17 bar)			Inverted Cone	PEEK™	10-pk
1/8" FITTINGS FOR 1/8" OD TUBING							
002222S	1/4•28	1,000 psi (69 bar)	600 psi (42 bar)	500 psi (34 bar)	Type P & Type S	PEEK™	ea.
002244S	1/4•28, short	250 psi (17 bar)			Inverted Cone	PEEK™	10-pk



1/16" FITTINGS FOR 1/16" OD TUBING						
PART NUMBER	THREAD	PRESSURE RATINGS (BASED FERRULE PAIRING)		FERRULE TYPE	MATERIAL	QTY
		SS FERRULE	PEEK™ FERRULE			
002135	M6	1,000 psi (69 bar)	800 psi (42 bar)	Type P, Type S & Gripper	PEEK™	10-pk
1/8" FITTINGS FOR 1/8" OD TUBING						
002235	M6	1,000 psi (69 bar)	600 psi (42 bar)	Type P, Type S & Gripper	PEEK™	ea.

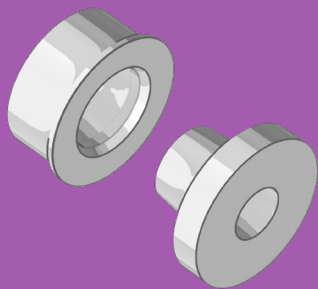


1/16" FITTINGS FOR 1/16" OD TUBING						
PART NUMBER	THREAD	PRESSURE RATINGS (BASED FERRULE PAIRING)		FERRULE TYPE	MATERIAL	QTY
		SS FERRULE	PEEK™ FERRULE			
002122	1/4"•28	1,000 psi (69 bar)	800 psi (42 bar)	Type P, Type S & Gripper	PEEK™	10-pk
1/8" FITTINGS FOR 1/8" OD TUBING						
002222	1/4"•28	1,000 psi (69 bar)	600 psi (42 bar)	Type P, Type S & Gripper	PEEK™	ea.



1/16" FITTINGS FOR 1/16" OD TUBING						
PART NUMBER	THREAD	PRESSURE RATINGS (BASED FERRULE PAIRING)		FERRULE TYPE	MATERIAL	QTY
		SS FERRULE	PEEK™ FERRULE			
002119	1/4"•28	1,000 psi (69 bar)	800 psi (42 bar)	Type P, Type S & Gripper	PEEK™	10-pk
1/8" FITTINGS FOR 1/8" OD TUBING						
002219	1/4"•28	1,000 psi (69 bar)	600 psi (42 bar)	Type P, Type S & Gripper	PEEK™	ea.

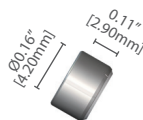
Ferrules



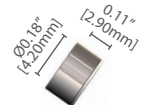
Ferrules Description

Type P: SS Ferrules

The one-piece ferrule fits permanently onto the outside of semi-rigid tubing. Ferrules have an inner PTFE sealing face ensuring that only PTFE is in the fluid path. The outer casing is stainless steel.



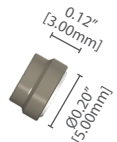
1/16" FERRULES FOR 1/16"			
PART NUMBER	DESCRIPTION	PRESSURE RATING	QTY
008FT32	PTFE / SS ferrule for 1/4•28 & M6 fittings	1,000 psi (69 bar)	10-pk
1/8" FERRULES FOR 1/8"			
008FT16	PTFE / SS ferrule for 1/4•28 & M6 fittings	1,000 psi (69 bar)	10-pk



3/16" FERRULES FOR 3/16"			
PART NUMBER	DESCRIPTION	PRESSURE RATING	QTY
08FT47	PTFE / SS ferrule for 5/16•24 fittings	200 psi (14 bar)	10-pk

Type P: PEEK™ Ferrules

The one-piece ferrule fits permanently onto the outside of semi-rigid tubing. Ferrules have an inner PTFE sealing face ensuring that only PTFE is in the fluid path. The outer casing is PEEK™.



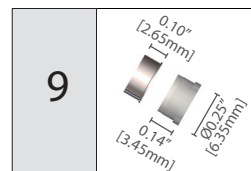
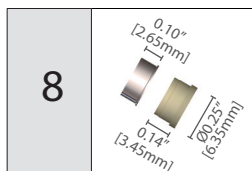
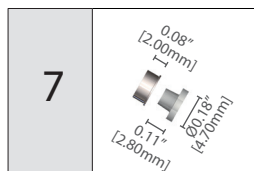
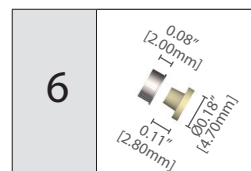
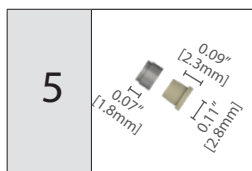
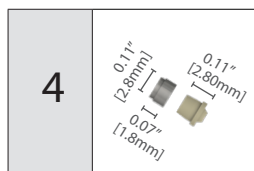
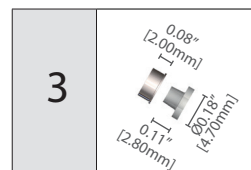
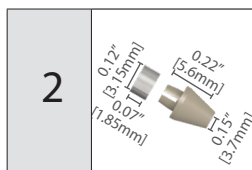
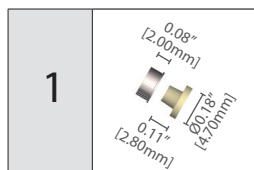
1/16" FERRULES FOR 1/16"			
PART NUMBER	DESCRIPTION	PRESSURE RATING	QTY
008FTK32	PTFE / PEEK™ ferrule for 1/4•28 & M6 fittings	800 psi (56 bar)	10-pk
1/8" FERRULES FOR 1/8"			
008FTK16	PTFE / PEEK™ ferrule for 1/4•28 & M6 fittings	600 psi (42 bar)	10-pk

Ferrules

Type S Ferrules

This ferrule type is a two-piece part which fits permanently to the outside of the tubing. Two-part ferrules consist of an inner PEEK™ or ETFE sealing surface surrounded by a stainless steel (SS) lock ring with only the inner portion in the fluid path.

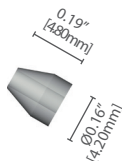
1/16" FERRULES FOR 1/16"				
IMAGE NUMBER	PART NUMBER	DESCRIPTION	PRESSURE RATING	QTY
1	008FK16	PEEK™ ferrule and SS lock ring flat bottom port	500 psi (34 bar)	10-pk
2	008FK16-C1	PEEK™ ferrule, taper port and SS lock ring	500 psi (34 bar)	10-pk
3	008FZ16	ETFE ferrule and SS lock ring flat bottom port	500 psi (34 bar)	10-pk
4	008FK16-03C9L	PEEK™ ferrule; taper port, 0.3mm through hole	500 psi (34 bar)	10-pk
4	008FK16-05C9L	PEEK™ ferrule; taper port, 0.5mm through hole	500 psi (34 bar)	10-pk
4	008FK16-08C9L	PEEK™ ferrule; taper port, 0.8mm through hole	500 psi (34 bar)	10-pk
5	008FK16-F9L	PEEK™ ferrule; flat port, and SS lock ring	500 psi (34 bar)	10-pk
1/8" FERRULES FOR 1/8"				
6	008FK32	PEEK™ ferrule and SS lock ring flat bottom port	500 psi (34 bar)	10-pk
7	008FZ32	ETFE ferrule and SS lock ring flat bottom port	500 psi (34 bar)	10-pk
3/16" FERRULES FOR 3/16"				
8	008FK47	One piece PEEK™ ferrule and SS lock ring flat bottom port for 5/16-24 fittings 10-pk	200 psi (34 bar)	10-pk
9	008FZ47	One piece ETFE ferrule and SS lock ring flat bottom port for 5/16-24 fittings 10-pk	200 psi (34 bar)	10-pk



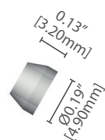
Ferrules

Inverted Cone Ferrules

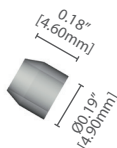
The Omni-Lok™ inverted cone provides a simple, easy to use low-pressure connection. Only the ETFE cone is in the fluid path. No tools are required to assemble a flangeless fitting quickly and easily just slip the fitting and the ETFE cone over the tubing and screw into the port. None of the parts are permanently attached to the tubing, so both fittings and inverted cones can easily be removed and re-used.



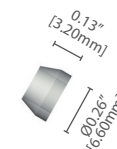
1/16" FERRULES FOR 1/16"		
PART NUMBER	DESCRIPTION	QTY
008CZ16	ETFE inverted cone	10-pk



1/8" FERRULES FOR (1/8") 2.0, 2.5, 3.0 & 3.2MM		
PART NUMBER	DESCRIPTION	QTY
008CZ19	1.8-2.0mm	10-pk
008CZ25	2.5mm	10-pk
008CZ30	3.0mm	10-pk
008CZ32	1/8" (3.2mm)	10-pk



1/8" FERRULES FOR (1/8") 2.0, 2.5, 3.0 & 3.2MM		
PART NUMBER	DESCRIPTION	QTY
001545	1/8" (3.2mm)	10-pk

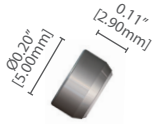


3/16" FERRULES FOR 3/16"		
PART NUMBER	DESCRIPTION	QTY
008CZ47	ETFE inverted cone	10-pk

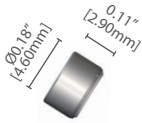
Ferrules

Gripper Ferrules

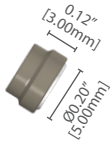
The one-piece ferrule fits permanently onto the outside of semi-rigid tubing. Ferrules have an inner PTFE sealing face ensuring that only PTFE is in the fluid path. The outer casing is stainless steel (SS) or PEEK™.



1/16" FERRULES FOR 1/16"			
PART NUMBER	DESCRIPTION	PRESSURE RATING	QTY
002310	PTFE / SS ferrule for ¼•28 fittings	1,000 psi (69 bar)	10-pk
1/8" FERRULES FOR 1/8"			
002312	PTFE / SS ferrule for ¼•28 fittings	1,000 psi (69 bar)	10-pk

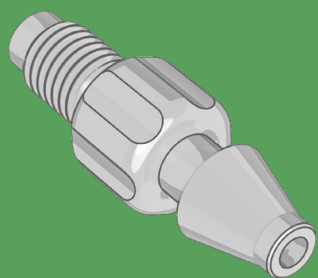


1/16" FERRULES FOR 1/16"			
PART NUMBER	DESCRIPTION	PRESSURE RATING	QTY
002313	PTFE / SS ferrule for M6 fittings	1,000 psi (69 bar)	10-pk
1/8" FERRULES FOR 1/8"			
002314	PTFE / SS ferrule for M6 fittings	1,000 psi (69 bar)	10-pk



1/16" FERRULES FOR 1/16"			
PART NUMBER	DESCRIPTION	PRESSURE RATING	QTY
008FTK16	PTFE / PEEK™ ferrule for ¼•28 & M6 fittings	800 psi (56 bar)	10-pk
1/8" FERRULES FOR 1/8"			
008FTK32	PTFE / PEEK™ ferrule for ¼•28 & M6 fittings	600 psi (42 bar)	10-pk

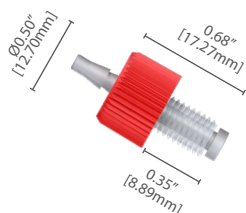
Alternate Connections



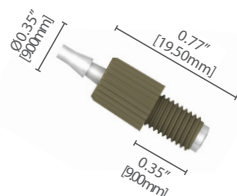
Adaptors, Bottlecaps and Alternate Connections

Click-N-Seal® Barbed Adaptors

Click-N-Seal Self-Torquing Adaptors provide thread to barb connections that can't be overtightened. These adaptors are used to retain 1/16", 1/8", 5/32" ID softwall tubing and provide connection with 1/4"-28 UNF or M6 threaded ports. All male barbed adaptors are made with PC, and all ultra male adaptors are made with PEEK™. All adaptors are sold in packs of 10.



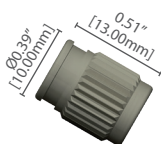
CLICK-N-SEAL MALE BARB ADAPTORS		
PART NUMBER	THREAD	TUBE ID
08NB16-CS5X	1/4"•28 M	1/16" (1.57 mm)
08NB16-CS6X	M6	1/16" (1.57 mm)
08NB32-CS5X	1/4"•28 M	1/8" (3.2 mm)
08NB32-CS6X	M6	1/8" (3.2 mm)
08NB40-CS5X	1/4"•28 M	5/32" (4.0 mm)



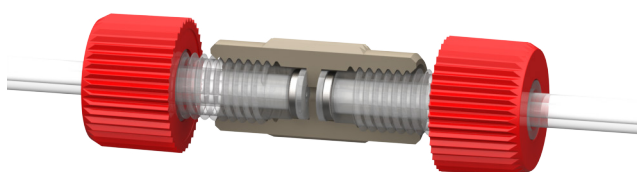
CLICK-N-SEAL ULTRA MALE BARB ADAPTORS		
PART NUMBER	THREAD	TUBE ID
08NB16-KT5L	1/4"•28 M	1/16" (1.57 mm)
08NB16-KT6L	M6	1/16" (1.57 mm)
08NB32-KT5L	1/4"•28 M	1/8" (3.2 mm)
08NB32-KT6L	M6	1/8" (3.2 mm)

In-Line Connectors

Compact in-line connectors using the Dibafit™ Gripper are ideal when space is limited. Tubing line 1 is passed through the connector and secured using a Gripper ferrule. The 1/4"-28 UNF female port then accepts a standard threaded fitting from a second fluid line.



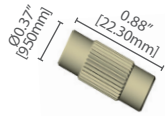
TWO WAY ADAPTORS					
PART NUMBER	MATERIAL	COLOR	THREAD S	BORE	QTY
002333	PEEK™	Natural	1/4"•28 F	1/16"	ea
002334	PEEK™	Natural	1/4"•28 F	1/8"	ea
002CN2-16A	Acetal	White	1/4"•28 F	1/16"	10-pk
002CN2-32A	Acetal	White	1/4"•28 F	1/8"	10-pk



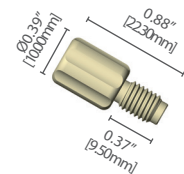
Alternate Connections

Adaptors

Dibafit™ threaded adaptors enable you to connect fitting lines and convert thread sizes quickly and easily.



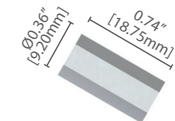
TWO WAY ADAPTORS					
PART NUMBER	MATERIAL	THREAD 1	THREAD 2	BORE	QTY
002306	PEEK™	¼•28 F	10-32 F	1.5mm	ea



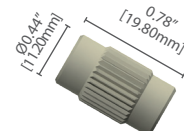
TWO WAY ADAPTORS					
PART NUMBER	MATERIAL	THREAD 1	THREAD 2	BORE	QTY
002352	PEEK™	¼•28 F	M6 M	1.5mm	ea

Unions

Unions enable you to connect fitting lines and convert thread sizes quickly and easily. Similar to a coupling, the union allows the convenience of future disconnection for maintenance or fixture replacement.



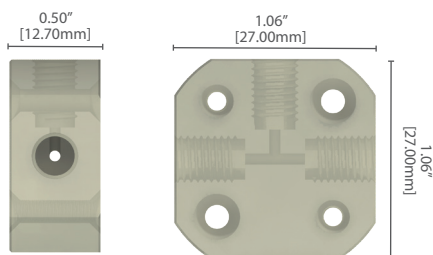
TWO WAY ADAPTORS					
PART NUMBER	MATERIAL	THREAD 1	THREAD 2	BORE	QTY
002301	PP	¼•28 F	¼•28 F	1.5mm	10 pk
002302	ETFE	¼•28 F	¼•28 F	1.5mm	10 pk



TWO WAY ADAPTORS					
PART NUMBER	MATERIAL	THREAD 1	THREAD 2	BORE	QTY
002307	PEEK™	¼•28 F	¼•28 F	1.5mm	ea

Mountable Block Connectors

The 3-way and 4-way block connectors have an internal bore of 1.5mm. They are mountable and can be used with Omnifit Gripper fittings or Omni-Lok™ Type P or S fittings.



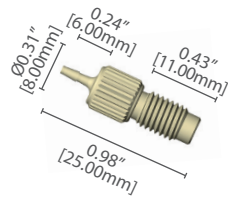
BLOCK CONNECTORS				
PART NUMBER	MATERIAL	THREAD S	CONFIGURATION	QTY
001057	PEEK™	¼•28 F	3-way	ea
001058	PEEK™	¼•28 F	4-way	ea

Alternate Connections

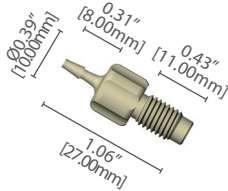
Barbed Adaptors

Dibaft™ barbed adaptors are designed for use with soft-wall tubing. Machined from chemically resistant PEEK™ or acetal. A tight, leak-free connection can be ensured by matching the ID of your tubing to the barb size of the adaptor. If there is not an exact match, always choose the barb size that is just larger than your tubing ID.

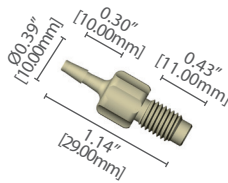
To connect softwall tubing into any female 1/4"-28 UNF port, use a male 1/4"-28 UNF to barb adaptor. The male thread screws into the port and tubing can then be pushed over the barb. To connect softwall tubing to any male 1/4"-28 UNF thread, use a female 1/4"-28 UNF to barb adaptor. The barb is inserted into the softwall tubing and the female 1/4"-28 UNF port is available to receive any 1/4"-28 UNF threaded fitting.



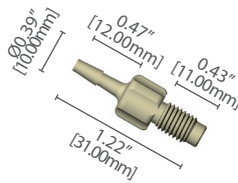
MALE 1/4"-28 UNF TO BARB ADAPTOR				
PART NUMBER	THREAD	MATERIAL	TUBE I.D.	QTY
008NB10-KD5L	1/4" • 28M	PEEK™	1.0mm	5-pk
008NB10-AD5B	1/4" • 28M	Acetal	1.0mm	5-pk



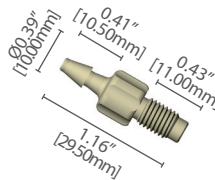
MALE 1/4"-28 UNF TO BARB ADAPTOR				
PART NUMBER	THREAD	MATERIAL	TUBE I.D.	QTY
008NB15-KD5L	1/4" • 28M	PEEK™	1.5mm	5-pk
008NB15-AD5B	1/4" • 28M	Acetal	1.5mm	5-pk



MALE 1/4"-28 UNF TO BARB ADAPTOR				
PART NUMBER	THREAD	MATERIAL	TUBE I.D.	QTY
008NB20-KD5L	1/4" • 28M	PEEK™	2.0mm	5-pk
008NB20-AD5B	1/4" • 28M	Acetal	2.0mm	5-pk



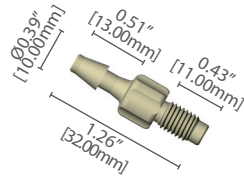
MALE 1/4"-28 UNF TO BARB ADAPTOR				
PART NUMBER	THREAD	MATERIAL	TUBE I.D.	QTY
008NB25-KD5L	1/4" • 28M	PEEK™	2.5mm	5-pk
008NB25-AD5B	1/4" • 28M	Acetal	2.5mm	5-pk



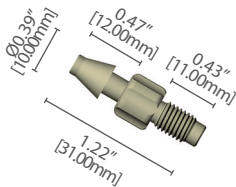
MALE 1/4"-28 UNF TO BARB ADAPTOR				
PART NUMBER	THREAD	MATERIAL	TUBE I.D.	QTY
008NB30-KD5L	1/4" • 28M	PEEK™	3.0mm	5-pk
008NB30-AD5B	1/4" • 28M	Acetal	3.0mm	5-pk

Alternate Connections

Barbed Adaptors continued



MALE 1/4"-28 UNF TO BARB ADAPTOR				
PART NUMBER	THREAD	MATERIAL	TUBE I.D.	QTY
008NB32-KD5L	1/4" • 28M	PEEK™	3.2mm	5-pk
008NB32-AD5B	1/4" • 28M	Acetal	3.2mm	5-pk



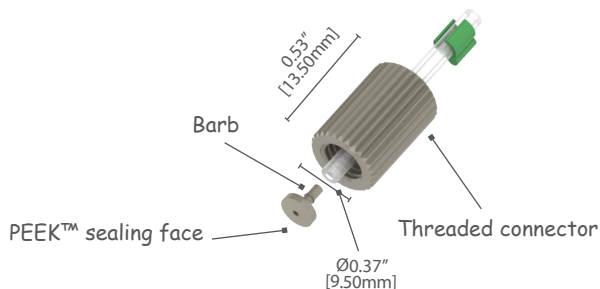
MALE 1/4"-28 UNF TO BARB ADAPTOR				
PART NUMBER	THREAD	MATERIAL	TUBE I.D.	QTY
008NB40-KD5L	1/4" • 28M	PEEK™	4.0mm	5-pk
008NB40-AD5B	1/4" • 28M	Acetal	4.0mm	5-pk
008NB60-KD5L	1/4" • 28M	PEEK™	6.0mm	5-pk
008NB60-AD5B	1/4" • 28M	Acetal	6.0mm	5-pk

MicroBarb®

MicroBarb® provides a secure, low-carryover connection between flexible soft tubing and semi-rigid tubing. The two component fitting ensures that both the ID and OD of the soft tubing are firmly gripped, ensuring a secure connection. The barbed component fits inside the tube ID and creates a connection. The threaded outer connector slips over the tubing OD and secures the barb in place, creating a female threaded flat-bottom port.

PEEK™ construction gives a chemically inert and robust connection. Simply locate the tube ID and OD in the table below to identify the MicroBarb® part number for your application. For special tubing sizes, please call the factory to see if we have a MicroBarb® combination to suit your needs.

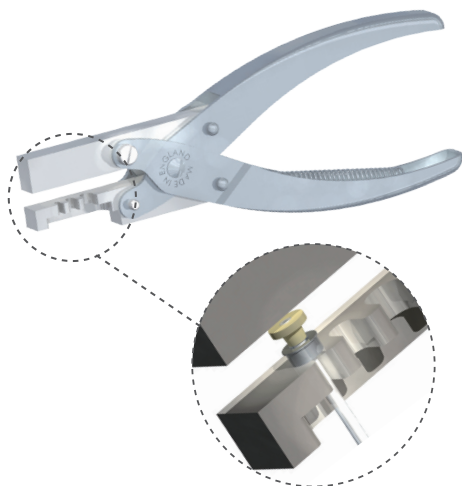
MicroBarb® connections are also sized for common peristaltic pump tube sizes. These tubes use color-coded stops to indicate the size and type of tube.



MICROBARB			
PART NUMBER	TUBE OD	TUBE ID	QTY
008MB025-208K2L ORG-BLU	0.082"	0.01"	25 pk
008MB076-208K2L	0.082"	0.03"	25 pk
008MB025-234K2L	0.092"	0.02"	25 pk
008MB051-234K2L ORG-YEL	0.092"	0.02"	25 pk
008MB051-264K2L	0.104"	0.02"	25 pk
008MB095-263K2L WHT-BLK	0.104"	0.03"	25 pk

Alternate Connections

Omni-Lok™ Type S Assembly Tool



Omni-Lok™ Type S ferrule assembly requires the Omni-Lok™ Type S Assembly Tool, which press fits the lock ring onto the ferrule and assembles both parts onto the tube end in one simple operation. Full instructions are provided with the tool and on our website (www.dibaind.com).

MICROBARB		
PART NUMBER	DESCRIPTION	QTY
008AT	Omni-Lok™ Type S Assembly Tool	ea
008AT-T	Omni-Lok™ Type S Assembly Tool for tapered ferrules	ea

Click-N-Seal® Wrenches

Made of aluminum, Diba's Click-N-Seal® wrenches are ideal when working in spaces where access is limited. These wrenches are ideal for fittings in places that fingers cannot reach, the wrenches work by locking on to the head of our fittings and doing all the torquing for you.



DB100-13200
Click-N-Seal® Wrench



DB100-13309
Click-N-Seal® Wrench

Filters

Whether preventing particulates from causing damage to expensive valves, or keeping samples pure before they are measured, Diba filter products help protect and improve the flow path of your fluid handling system. Our customizable filters can typically remove a range of particulate sizes from 5μ up to 250μ, and are available in a variety of materials to suit your chemical compatibility and cost-efficiency needs.

In-Line Filters

There are many different mesh sizes and materials (including PEEK™ and 316 stainless steel) available to remove different particulate sizes. Several port configurations are available: male to female, female to female, etc. and in different port sizes including ¼-28 and M6.

Bottle Straw Filters

These bottle filters easily attach to the bottom of an aspirating tubing and they can include a barb for inserting into soft tubing, or a push fit for harder wall tube such as PTFE. They are designed to sit on the bottom of the bottle and castellations along the bottom edge allow the maximum amount of liquid to be aspirated out of the container without causing the straw to vacuum lock.

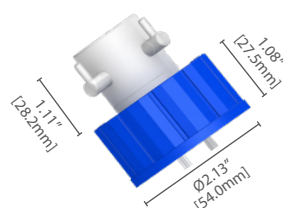
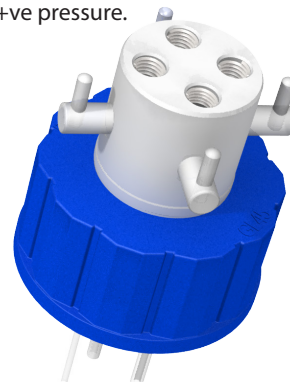


Alternate Connections

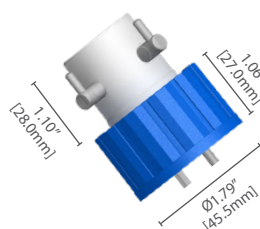
Q-Series Solvent Bottle Caps

Omnifit® Labware Q-series is a versatile range of caps with the security of threaded fitting nuts to ensure a leak-free vapor-tight seal, ideal for repeated connect/disconnect. The anti-twist design allows the PTFE body to spin freely within the outer blue cap. This means no more twisted tubes when the cap is fitted or removed and no need to disconnect fluid lines before unscrewing the cap. Q-series caps offer a secure way to connect tubing using 1/4-28 UNF fitting nuts. Each port has a robust stainless steel thread insert to enable repeated connect/disconnect.

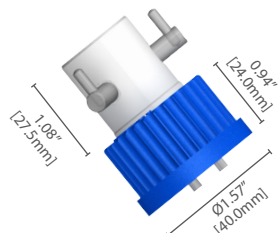
The solid PTFE inner body provides the highest chemical inertness. The PTFE creates a reliable seal to the glass bottle with no need for extra seals or O-rings. In normal use, the outer cap is not wetted. All caps can be autoclaved. The outer cap is made from a glass-filled PP. Operating pressures for this cap are -10 psi for vacuum sealed and 20 psi for +ve pressure.



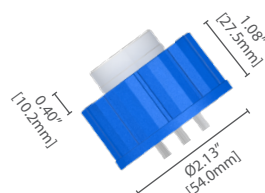
GL45 THREAD BOTTLECAPS				
PART NUMBER	PORT	THREAD	ON-OFF VALVE	QTY
00945Q-2V	2 x 1/4-28	GL45	Yes	ea.
00945Q-3V	3 x 1/4-28	GL45	Yes	ea.
00945Q-4V	4 x 1/4-28	GL45	Yes	ea.



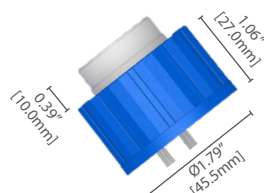
GL38 THREAD BOTTLECAPS				
PART NUMBER	PORT	THREAD	ON-OFF VALVE	QTY
00938PQ-2V	2 x 1/4-28	38-430	Yes	ea.
00938PQ-3V	3 x 1/4-28	38-430	Yes	ea.



GL32 THREAD BOTTLECAPS				
PART NUMBER	PORT	THREAD	ON-OFF VALVE	QTY
00932Q-3V	3 x 1/4-28	GL32	Yes	ea.



GL45 THREAD BOTTLECAPS				
PART NUMBER	PORT	THREAD	ON-OFF VALVE	QTY
00945Q-2	2 x 1/4-28	GL45	No	ea.
00945Q-3	3 x 1/4-28	GL45	No	ea.
00945Q-4	4 x 1/4-28	GL45	No	ea.



GL38 THREAD BOTTLECAPS				
PART NUMBER	PORT	THREAD	ON-OFF VALVE	QTY
00938Q-2	2 x 1/4-28	38-430	No	ea.
00938Q-3	3 x 1/4-28	38-430	No	ea.
00938Q-4	4 x 1/4-28	38-430	No	ea.

Alternate Connections

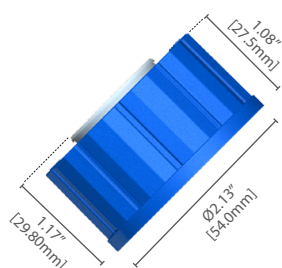
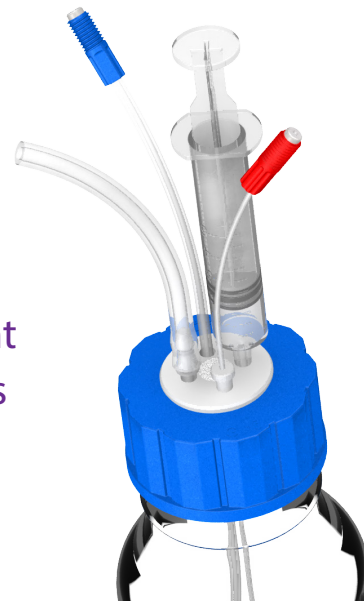
T-Series Solvent Bottle Caps

Omnifit® Labware T-series is a very easy to use and versatile range of caps that require no additional fittings to connect 1/8" OD semi-rigid tubing. Tubing pushes straight through the port creating a liquid and vapor-tight seal. Anti-twist design means there is no need to disconnect fluid lines before unscrewing the cap. The solid PTFE inner body provides the highest chemical inertness. The PTFE creates a reliable seal to the glass bottle with no need for extra seals or O-rings.

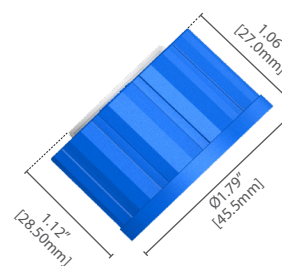
T-series caps are ideal for use in vacuum applications. T-series caps without an integral check valve and filter can also be used in positive pressure applications but only when 1/8" OD through tubes are used. This cap has a check valve made from fluorocarbon, and a filter that is 10 µm long, and made of PTFE. All caps are pressure rated to -10 psi when vacuumed seal. T-series without a valve with 1/8" OD through tubes have a +ve pressure rating of 20 psi*.



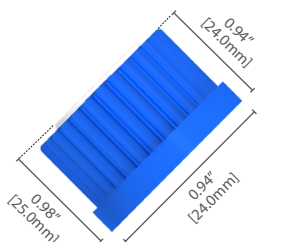
Luer ports combined with straight through tubing connections plus optional check valve and filter



GL45 THREAD BOTTLECAPS				
PART NUMBER	PORT	THREAD	ON-OFF VALVE	QTY
00945T-2F	2 x Luer	GL45	Yes	ea.
00945T-3F	3 x Luer	GL45	Yes	ea.
00945T-4F	3 x Luer	GL45	Yes	ea.
00945T-2	2 x Luer	GL45	No	ea.
00945T-3	3 x Luer	GL45	No	ea.
00945T-4	4 x Luer	GL45	No	ea.



GL38 THREAD BOTTLECAPS				
PART NUMBER	PORT	THREAD	ON-OFF VALVE	QTY
00938T-2F	2 x Luer	38-430	Yes	ea.
00938T-3F	3 x Luer	38-430	Yes	ea.
00938T-4F	4 x Luer	38-430	Yes	ea.
00938T-2	2 x Luer	38-430	No	ea.
00938T-3	3 x Luer	38-430	No	ea.
00938T-4	4 x Luer	38-430	No	ea.
00938PT-2F	2 x Luer	38-430	Yes	ea.
00938PT-2	2 x Luer	38-430	No	ea.



GL32 THREAD BOTTLECAPS				
PART NUMBER	PORT	THREAD	ON-OFF VALVE	QTY
00932T-2	2 x Luer	GL32	No	ea.

CAUTION! Use only vacuum or pressure-rated bottles

*Except 00938PT caps. These caps are designed to fit plastic bottles which are unsuitable for vacuum or pressurized applications. Therefore, 00938PQ caps are not pressure rated.

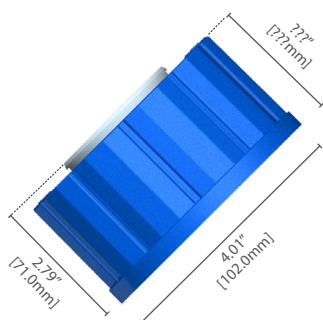
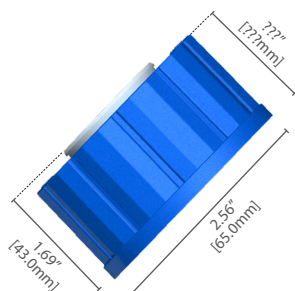
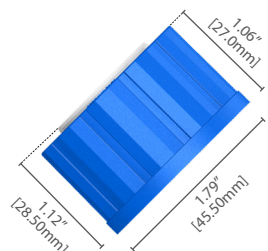
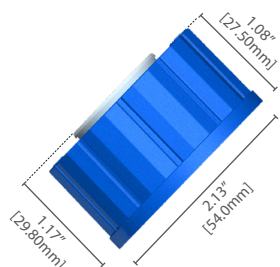
Alternate Connections

T-Series Waste Caps

Omnifit® Labware T-series waste caps are a very easy to use and versatile range of caps that require no additional fittings to connect 1/8" OD semi-rigid tubing. Tubing pushes straight through the port creating a liquid and vapor-tight seal. The anti-twist design allows the PTFE body to spin freely within the outer blue cap. This means no more twisted tubes when the cap is fitted or removed and no need to disconnect fluid lines before unscrewing the cap.

An additional port is available for venting purposes. The vapor trap enables the user to isolate any solvent vapor escaping from the system during pressure venting without the need to place waste bottles into a fume hood. An integral indicator strip shows when the vapor trap is saturated by a simple color change. When the strip turns red, it is time to change the vapor trap. The outer portion of the cap is made from a glass-filled PP and the O-ring seal (00953TW & 00983TW) is made of EPDM. All caps can be autoclaved, and are not recommended for pressurized applications.

Luer ports combined with straight through tubing connections plus 1/4"-28 UNF vent port



GL45 THREAD BOTTLECAPS

PART NUMBER	PORT	THREAD	VENT PORT	QTY
00945T-3W	3 x Luer	GL45	1 x 1/4" -28	ea.
00945T-4W	4 x Luer	GL45	1 x 1/4" -28	ea.

GL38 THREAD BOTTLECAPS

PART NUMBER	PORT	THREAD	VENT PORT	QTY
00938T-3W	3 x Luer	38-430	1 x 1/4" -28	ea.
00938T-4W	4 x Luer	38-430	1 x 1/4" -28	ea.

53B THREAD BOTTLECAPS

PART NUMBER	PORT	THREAD	VENT PORT	QTY
00953T-4W	4 x Luer	53B	1 x 1/4" -28	ea.

83B THREAD BOTTLECAPS

PART NUMBER	PORT	THREAD	VENT PORT	QTY
00983T-4W	4 x Luer	83B	1 x 1/4" -28	ea.
00983T-8W	8 x Luer	83B	1 x 1/4" -28	ea.

Diba OEM Partnership Promise

Quality



ISO 9001

Diba's Quality Management System is certified to ISO-9001:2015. This registration covers the Quality Management System for design and/or manufacture of fluid handling components and assemblies for wet chemistry analytical instrument manufacturers, including medical diagnostic instrument manufacturers. In addition, Diba Ltd. In Cambridge UK is certified to ISO 14001 and 18001 standards for environmental responsibility and safety, respectively. First Article and In-Process inspections as well as documented traceability are available.

From Diba's Quality Manual: "The quality management system is an integral part of all the corporation's management and production processes. It is not a separate element or function; each and every aspect of the day-to-day operations of the corporation shall be conducted in accordance with the quality policies contained in this manual. It is designed to integrate human, technical and material resources in a manner that results in optimum production consistent with the highest possible quality standards."

Kanban

Diba offers kanban and other inventory management programs to minimize lead time, ensure ready supply of components, and help OEMs operate just-in-time materials schemes.

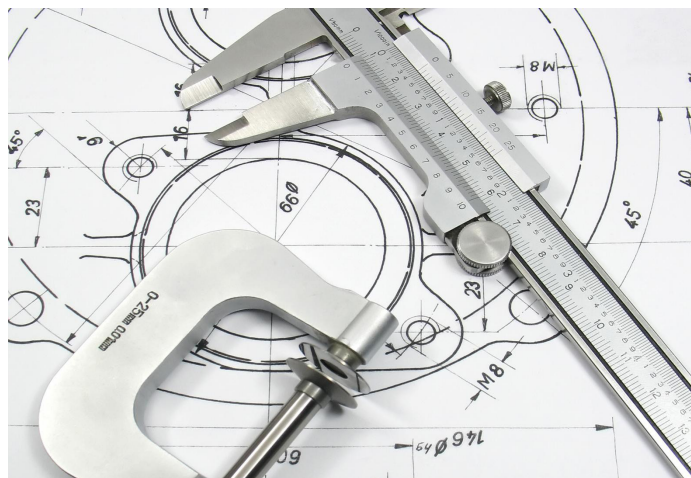
Account Teams

Each OEM is supported by a cross-functional account team including a customer service representative, application engineer, quality designate, account manager and an actively engaged executive team to commit the resources of the organization as necessary to overcome customer challenges.

Design Services & Rapid Prototyping

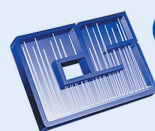
Diba offers a team of experienced application engineers who create unique solutions for troublesome fluid handling challenges. Application support is available to review mechanical, chemical and electrical specifications and customize Diba core capabilities and technologies for specific instrument needs. Dedicated sample technicians facilitate rapid prototyping of both tubing assemblies and probes.

We understand the cycle time demands associated with new instrument development. You need samples for breadboarding, for engineering prototypes, and for the validation build, and often the changes for these components come right up until the last minute. For this reason, Diba has documentation support and a dedicated model-building team as part of engineering, independent of series production operations, to handle small volume prototyping orders with quick-turn deliveries. Challenge us to help you meet your tight deadlines!



www.dibaind.com

A HALMA COMPANY



**CHROMATOGRAPHIC
SPECIALTIES INC.**

1-800-267-8103 • www.chromspec.com • tech@chromspec.com



DIBAFIT_CAT_2019_JAN