



For multi-mycotoxin analysis

18 mycotoxins at one go!

The CrossTOX® columns by LCTech allow a high efficient sample clean-up of regulated and expected mycotoxins in many matrices. At the same time, the columns improve the conventional dilute-and-shoot process via an QuEChERS based procedure:


- ✓ **High purity** of extracts due to special sorbents for high matrix binding; no separate syringe filtration
- ✓ **Significantly less 13C Internal standard** required due to special affinity mechanism of the columns
- ✓ **Extension of cleaning and maintenance intervals** of your LC-MS/MS system due to the high purity of the extracts
- ✓ **Only one column for a wide range** of applications

Catch them all

Aflatoxine B1, B2, G1, G2
Ochratoxin A
Zearalenon
Deoxynivalenol
Fumonisin B1, B2
T-2
HT-2
Nivalenol
3-Acetyl-DON
15-Acetyl-DON
DON-3Glc
Sterigmatocystin
Citrinin
Diacetoxyscirpenol



The CrossTOX® columns are suitable for both manual and automated processing. Please find in the following **your advantages compared to the conventional Dilute-and-Shoot** procedure:

		Dilute-and-Shoot	CrossTOX® Manual processing	CrossTOX® Automated processing with FREESTYLE
Extraction ▶	●	30 – 90 minutes	●	5-10 minutes
13C Internal Standard ▶	●	For all Toxins needed	●	For less toxins needed
Dilution of Extract ▶	●	Necessary	●	Not necessary
Way of Filtration ▶	●	Syringe filtration	●	Column filtration
Dispensing ▶	●	In vial	●	Direct injection to LC-MS/MS
Cleanliness of Extract ▶	●	Not clean enough	●	Very clean
LC-MS/MS Maintenance ▶	●	Permanent maintenance	●	Less maintenance
Process time / Man power ▶	●	Heavy workload	●	Less workload

LCTech



CHROMATOGRAPHIC
SPECIALTIES INC.

www.chromspec.com

1-800-267-8103 • sales@chromspec.com • tech@chromspec.com





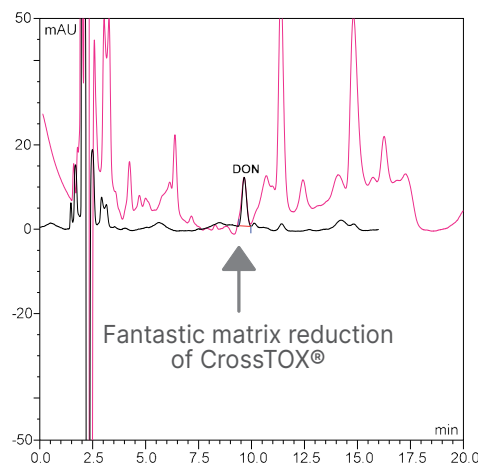
Range of Applications

The range of applications for CrossTOX® is remarkably wide. With only one extraction protocol the columns can be used for all matrices commonly in this analysis, e.g. cereals, nuts or dried fruits. The UV-chromatogram shows the very high clean-up efficiency of CrossTOX®. The **pink** line represents a wheat sample cleaned via the conventional dilute-and-shoot procedure (syringe filtration). The **black** line represents clean-up via CrossTOX®.

This shows the substantial improvement using dilute-and-shoot compared to CrossTOX® column clean-up.

*A constantly growing list of all matrices tested so far can be found at www.LCTech.de. We would also be happy to receive your feedback.

Recovery rates compliant to EN 401/2006

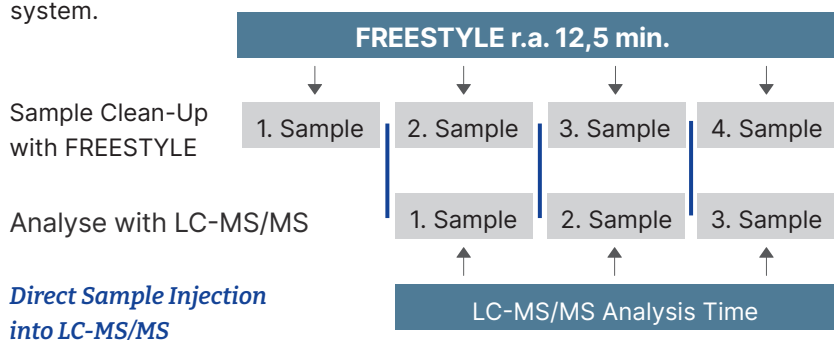


Processing via FREESTYLE

For automated processing of the CrossTOX® columns the FREESTYLE system offers two options:

- from raw extract to cleaned sample or
- from raw extract to chromatogramm (full automation)

In order to realize the highest possible degree of automation, the FREESTYLE SPE robotic system is simply upgraded with an HPLC Direct-Injection module for direct injection into your LC-MS/MS system. This enables the parallelization of clean-up and analysis for up to 120 samples/day and thus to an optimum utilization of your LC-MS/MS system.



Ordering Information

P/N	Description	Pc. / Pck.
17900	CrossTOX® Clean-up Columns Manual processing	100 Pc. / Pck.
17901	CrossTOX® Clean-up Columns Automated processing	100 Pc. / Pck.

FREESTYLE™ Robotic System FREESTYLE SPE + HPLC Direct-Injection-Module. We are happy to send you a suitable configuration on request.



**CHROMATOGRAPHIC
SPECIALTIES INC.**

www.chromspec.com

1-800-267-8103 • sales@chromspec.com • tech@chromspec.com

