

# LABDETEK



## LABORATORY CHASSIS WITH MULTIPLE HEATED ZONES

The LabDetek module offers extra heated zones to extend the gas analysis possibilities. It can be used as a standalone unit having its own software interface or be used in combination with the MultiDetek2 compact gas chromatograph system. In both cases, a sophisticated and user friendly interface allows the parameters setting. This module can be used as well as an extension of an existing third party gas chromatograph to extend the applications possibilities. The flexibility and versatility of this modular platform make it suitable to work in cooperation with any GC system.



[www.ldetek.com](http://www.ldetek.com)

Where innovation leads to success

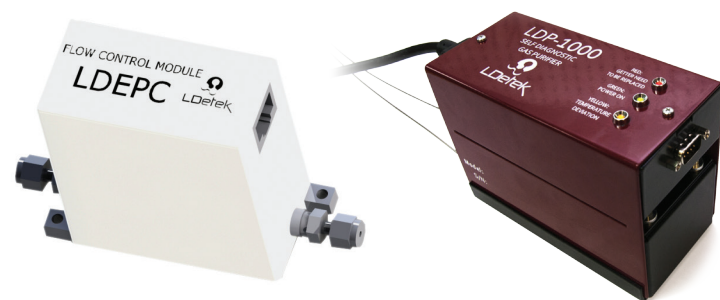


### CHROMATOGRAPHIC SPECIALTIES INC.

[www.chromspec.com](http://www.chromspec.com)

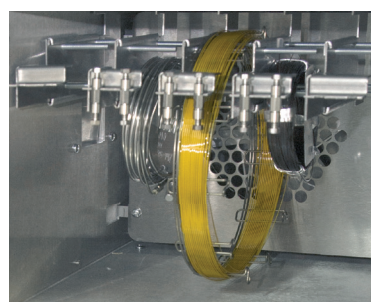
1-800-267-8103 • [instrum@chromspec.com](mailto:instrum@chromspec.com)





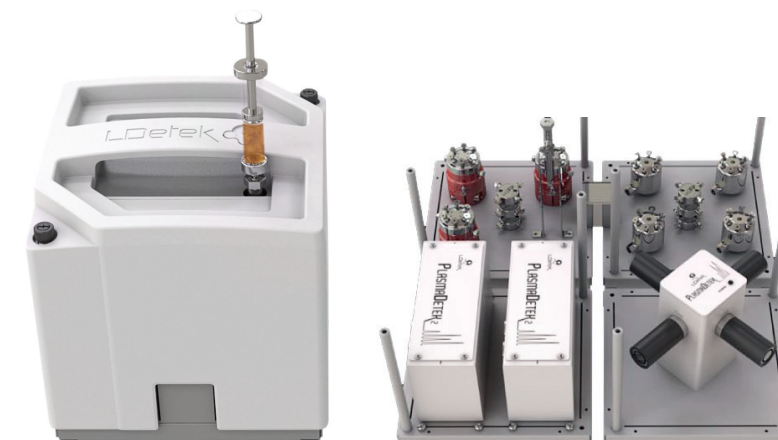
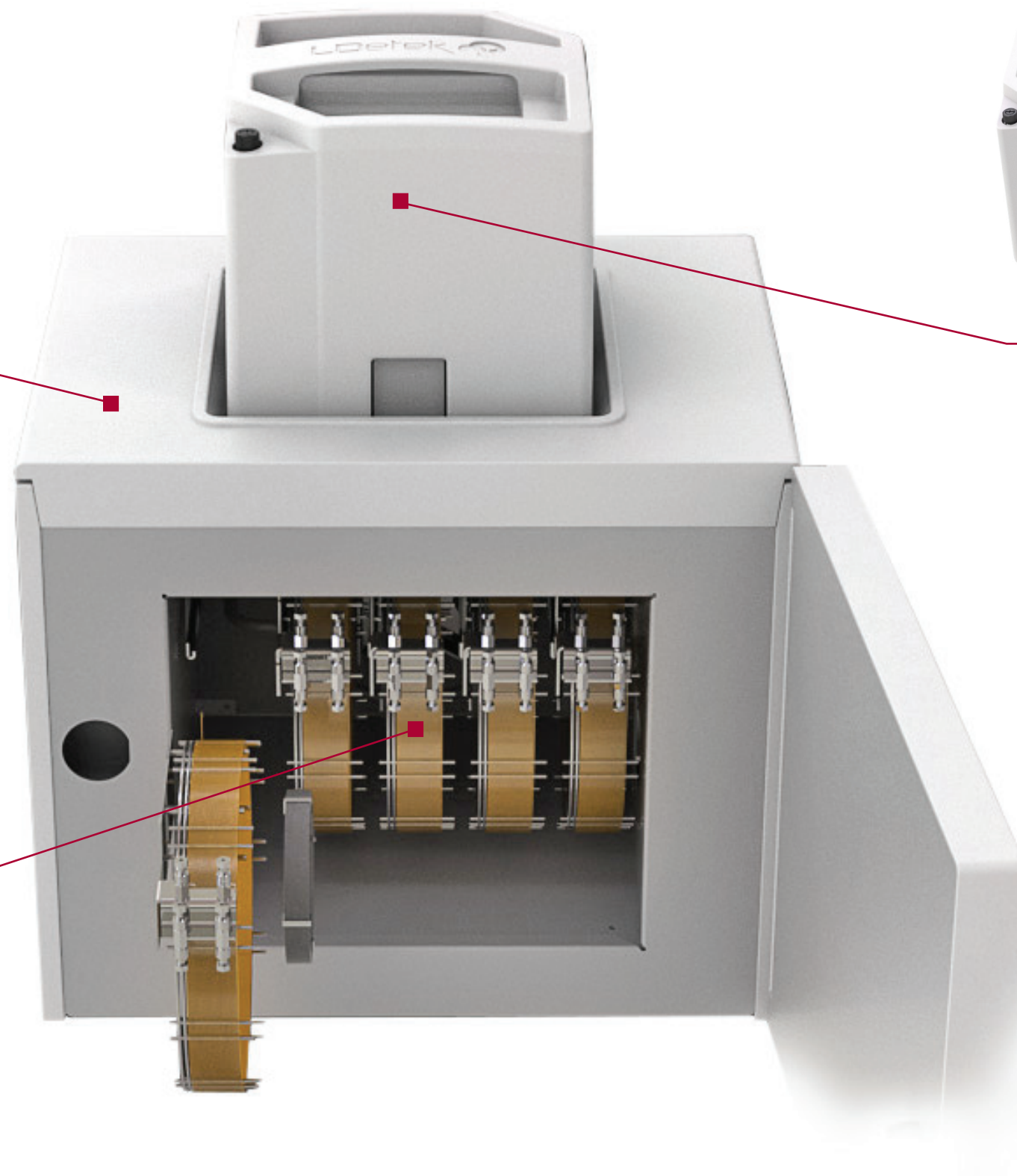
## AMBIANT ZONE

A free area is available to mount the flow controllers and the compact gas purifier for the gas flow control and to generate high purity carrier gas.



## PROGRAMMABLE HEATING ZONE

This zone offers a large heated space for fast temperature ramping going up to 350 Celsius. It can fit up to 5 x 6 inches + 5 x 3.5 inches coil diameter columns for a total of 10 columns. A well designed column support allows an easy mounting of the columns and end fittings individually. This is perfect for maintenance and column replacement. This zone can also be used to fit any combination of columns and valves that have to be heated.



## ISOTHERMAL HEATING ZONE

Based on a universal heated mounting plate system, this extra area can accept detectors, valves and columns in an isothermal environment that can achieve an operating temperature up to 200 Celsius. An injection port is also accessible on top of this zone to inject using a syringe or a headspace auto sampler system.



The LabDetek controller is used with the platform. This device offers multiple I/Os that can be used for different tasks like signal acquisitions, valves actuation, ovens and flows control. The controller communicates with the LabDetek interface module using Clarity from DataApex. The controller also offers serial and LAN communication protocols.



[www.ldetek.com](http://www.ldetek.com)

Where **innovation** leads to **success**

©Copyright 2016 LDetek Inc.



**CHROMATOGRAPHIC  
SPECIALTIES INC.**

[www.chromspec.com](http://www.chromspec.com)

1-800-267-8103 • [instrum@chromspec.com](mailto:instrum@chromspec.com)