

Restek GCxGC Columns

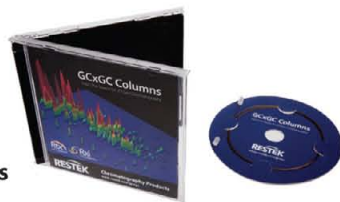
Your One Source for 2D Gas Chromatography

- Wide range of stationary phases offers orthogonal separations.
- High thermal stability maximizes system ruggedness and sensitivity.
- Unrivaled column inertness for accurate analysis of active compounds.
- 0.15, 0.18, and 0.25 mm ID formats accommodate varying sample capacities, speeds, and detectors.

Primary GCxGC Columns

(In order of increasing polarity)

Phase	Length	ID	df	temp. limits	cat.#
Rxi-1ms	30 m	0.25 mm	0.25 µm	-60 to 330/350 °C	13323
Rxi-5Sil MS	30 m	0.25 mm	0.25 µm	-60 to 330/350 °C	13623
Rxi-XLB	30 m	0.25 mm	0.25 µm	30 to 340/360 °C	13723
Rxi-17Sil MS	30 m	0.25 mm	0.25 µm	40 to 340/360 °C	14123
Rtx-200	30 m	0.25 mm	0.25 µm	-20 to 320/340 °C	15023
Stabilwax	30 m	0.25 mm	0.25 µm	40 to 250/260 °C	10623



Secondary GCxGC Columns

(In order of increasing polarity)

Secondary columns come in convenient 2 m lengths for economical method development.

Phase	Length	ID	df	temp. limits	cat.#
Rxi-1 MS	2 m	0.15 mm	0.15 µm	-60 to 330/350 °C	15114
	2 m	0.18 mm	0.18 µm	-60 to 330/350 °C	15120
	2 m	0.25 mm	0.25 µm	-60 to 330/350 °C	15127
Rxi-5Sil MS	2 m	0.15 mm	0.15 µm	-60 to 330/350 °C	15113
	2 m	0.18 mm	0.18 µm	-60 to 330/350 °C	15119
	2 m	0.25 mm	0.25 µm	-60 to 330/350 °C	15126
Rxi-XLB	2 m	0.15 mm	0.15 µm	30 to 340/360 °C	15115
	2 m	0.18 mm	0.18 µm	30 to 340/360 °C	15121
	2 m	0.25 mm	0.25 µm	30 to 340/360 °C	15128
Rxi-17Sil MS	2 m	0.15 mm	0.15 µm	40 to 340/360 °C	15110
	2 m	0.18 mm	0.18 µm	40 to 340/360 °C	15116
	2 m	0.25 mm	0.25 µm	40 to 340/360 °C	15123
Rtx-200	2 m	0.15 mm	0.15 µm	-20 to 320/340 °C	15111
	2 m	0.18 mm	0.18 µm	-20 to 320/340 °C	15117
	2 m	0.25 mm	0.25 µm	-20 to 320/340 °C	15124
Stabilwax	2 m	0.15 mm	0.15 µm	40 to 250/260 °C	15112
	2 m	0.18 mm	0.18 µm	40 to 250/260 °C	15118
	2 m	0.25 mm	0.25 µm	40 to 250/260 °C	15125

For assistance in choosing columns, turn the page.

GCxGC Selectivity Kits

- Each kit includes one Rxi®-1ms, Rxi®-5Sil MS, Rxi®-17Sil MS, Rtx®-200, Rxi®-XLB, and Stabilwax® column.
- Comprehensive kit simplifies column selection for method developers and frequent GCxGC users alike.
- Convenient 2 m lengths are ideal for use as secondary columns in GCxGC analyses.
- Included Press-Tight® connectors offer a reliable, hassle-free installation.



Description	qty.	cat.#
GCxGC (0.15 mm) Selectivity Kit	kit	15129

Includes (each product available separately)

Rxi-1ms	2 m x 0.15 mm x 0.15 µm	ea.	15114
Rxi-5Sil MS	2 m x 0.15 mm x 0.15 µm	ea.	15113
Rxi-XLB	2 m x 0.15 mm x 0.15 µm	ea.	15115
Rxi-17Sil MS	2 m x 0.15 mm x 0.15 µm	ea.	15110
Rtx-200	2 m x 0.15 mm x 0.15 µm	ea.	15111
Stabilwax	2 m x 0.15 mm x 0.15 µm	ea.	15112
Universal Press-Tight Connectors	Deactivated	5-pk.	20429

Description	qty.	cat.#
GCxGC (0.18 mm) Selectivity Kit	kit	15130

Includes (each product available separately)

Rxi-1ms	2 m x 0.18 mm x 0.18 µm	ea.	15120
Rxi-5Sil MS	2 m x 0.18 mm x 0.18 µm	ea.	15119
Rxi-XLB	2 m x 0.18 mm x 0.18 µm	ea.	15121
Rxi-17Sil MS	2 m x 0.18 mm x 0.18 µm	ea.	15116
Rtx-200	2 m x 0.18 mm x 0.18 µm	ea.	15117
Stabilwax	2 m x 0.18 mm x 0.18 µm	ea.	15118
Universal Press-Tight Connectors	Deactivated	5-pk.	20429

Description	qty.	cat.#
GCxGC (0.25 mm) Selectivity Kit	kit	15131

Includes (each product available separately)

Rxi-1ms	2 m x 0.25 mm x 0.25 µm	ea.	15127
Rxi-5Sil MS	2 m x 0.25 mm x 0.25 µm	ea.	15126
Rxi-XLB	2 m x 0.25 mm x 0.25 µm	ea.	15128
Rxi-17Sil MS	2 m x 0.25 mm x 0.25 µm	ea.	15123
Rtx-200	2 m x 0.25 mm x 0.25 µm	ea.	15124
Stabilwax	2 m x 0.25 mm x 0.25 µm	ea.	15125
Universal Press-Tight Connectors	Deactivated	5-pk.	20429



**CHROMATOGRAPHIC
SPECIALTIES INC.**
www.chromspec.com

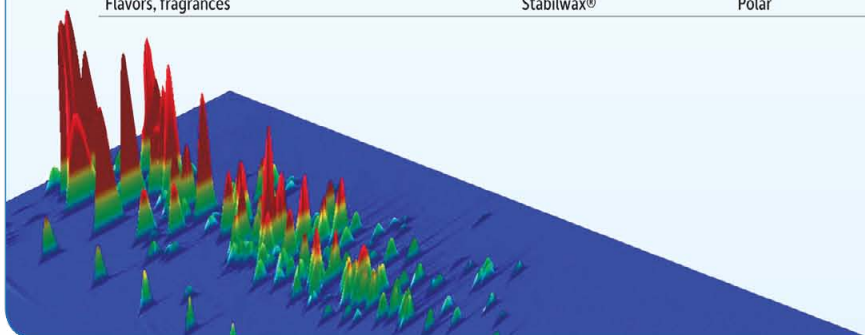
1-800-267-8103 • sales@chromspec.com • tech@chromspec.com



Restek GCxGC Column Combination Guide

To achieve ideal results in a GCxGC analysis, it is imperative that your primary and secondary columns feature orthogonal phases capable of producing differing separations. Use the chart below to find the perfect combination of Restek columns to maximize the effectiveness of your GCxGC system.

Application Area	Primary Column		Secondary Column	
	Phase	Selectivity	Phase	Selectivity
Petrochemical	Rxi®-1ms	Non-polar	Rxi®-17Sil MS	Mid polarity, aromatic selective
Petrochemical	Rxi®-5Sil MS	Low polarity	Rxi®-17Sil MS	Mid polarity, aromatic selective
PAHs, environmental	Rxi®-17Sil MS	Mid polarity, aromatic selective	Rxi®-1ms	Non-polar
PAHs, environmental	Rxi®-17Sil MS	Mid polarity, aromatic selective	Rxi®-5Sil MS	Low polarity
PCBs, PBDEs, PAHs, environmental	Rxi®-XLB	Low polarity, planar selective	Rxi®-17Sil MS	Mid polarity, aromatic selective
Mono-ortho, coplanar PCBs	Rxi®-1ms	Non-polar	Rxi®-XLB	Low polarity, planar selective
Mono-ortho, coplanar PCBs	Rxi®-5Sil MS	Low polarity	Rxi®-XLB	Low polarity, planar selective
Pesticides, nitroaromatics, halogenated compounds	Rxi®-1ms	Non-polar	Rtx®-200	Mid polarity, electronegative selectivity
Pesticides, nitroaromatics, halogenated compounds	Rxi®-5Sil MS	Low polarity	Rtx®-200	Mid polarity, electronegative selectivity
Pesticides, nitroaromatics, halogenated compounds	Rxi®-XLB	Low polarity, planar selective	Rtx®-200	Mid polarity, electronegative selectivity
Flavors, fragrances	Rxi®-1ms	Non-polar	Stabilwax®	Polar
Flavors, fragrances	Rxi®-5Sil MS	Low polarity	Stabilwax®	Polar
Flavors, fragrances	Stabilwax®	Polar	Rxi®-1ms	Non-polar
Flavors, fragrances	Stabilwax®	Polar	Rxi®-5Sil MS	Low polarity



PATENTS & TRADEMARKS

Restek® patents and trademarks are the property of Restek Corporation. (See www.restek.com/Patents-Trademarks for full list.) Other trademarks appearing in Restek® literature or on its website are the property of their respective owners. The Restek® registered trademarks used here are registered in the United States and may also be registered in other countries.



Lit. Cat.# GNTS1762-UNV
© 2013 Restek Corporation. All rights reserved.
Printed in the U.S.A.



CHROMATOGRAPHIC SPECIALTIES INC.

www.chromspec.com

1-800-267-8103 • sales@chromspec.com • tech@chromspec.com

