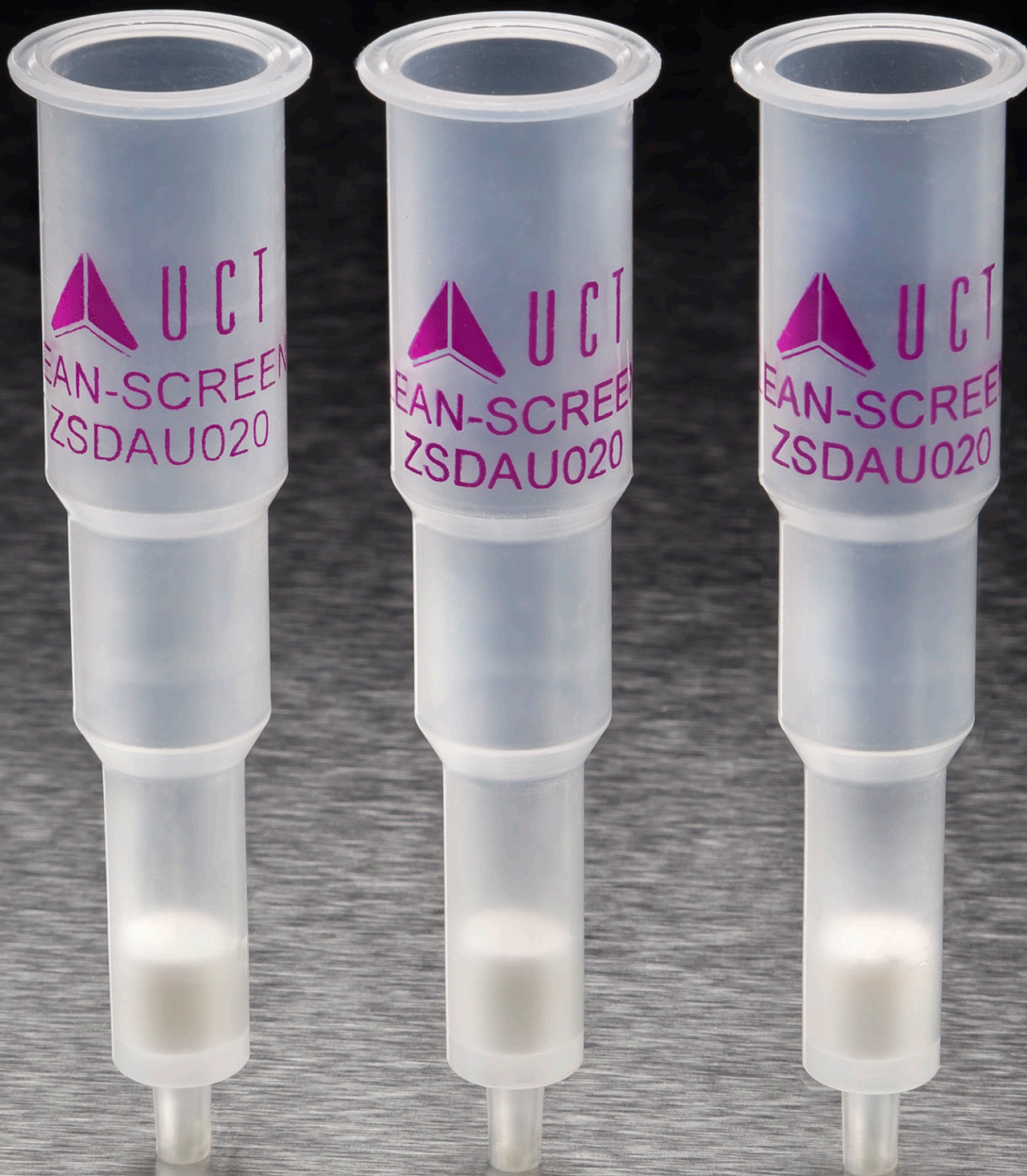




CLEAN SCREEN®

CO-POLYMERIC BONDED PHASES FOR
TESTING DRUGS OF ABUSE



INNOVATION THROUGH CHEMISTRY



**CHROMATOGRAPHIC
SPECIALTIES INC.**

1-800-267-8103 • www.chromspec.com • tech@chromspec.com



Analytical demand for more efficient, robust and clean extraction of drugs from biological matrices led to the development of CLEAN SCREEN® sorbents. Since 1986, CLEAN SCREEN® has led the industry with dependable and reproducible Solid Phase Extraction products and applications. CLEAN SCREEN® phases are true co-polymeric sorbents that contain hydrophobic and ion exchange functional groups uniquely polymerized to a silica substrate. The design and quality of CLEAN SCREEN® provides superior sample clean up, recovery and reproducibility.

Mixed-mode separations allow maximum selectivity for extraction of acidic, neutral and basic compounds. This selectivity makes CLEAN SCREEN® ideal for both screening and confirmation analysis for virtually all drug categories.



CLEAN SCREEN® DAU

This column is co-polymerized on a rigid, purified silica gel. The two functional groups include a reverse phase and an ion exchanger (benzenesulfonic acid). This column is commonly used for analyzing a wide range of drugs of abuse, including acidic, basic & neutral drugs.



CLEAN SCREEN® GHB

This column is co-polymerized on a rigid, purified silica gel. Most analytical methods are based upon interconversion to lactone and chemical derivatization to form the TMS derivative. This column is for the extraction of free GHB.



CLEAN SCREEN® BNZ

This column is co-polymerized on a rigid, purified silica gel. The phase is a polar organic phase. This column is commonly used for analyzing a wide range of benzodiazepines with exceptional recovery of 7-amino metabolites.



CLEAN SCREEN® THC

This column is co-polymerized on a rigid, purified silica gel. The two functional groups include a reverse phase and an ion exchanger (primary amine). This column is commonly used for analyzing THC and its metabolites.



CLEAN SCREEN® ETG

This column is a specialized activated carbon column. It is used specifically for analyzing ethyl glucuronide in urine by both LC/MS and GC/MS.

PRICES AND TERMS

Our prices are subject to change without notice. The price in effect when we receive your order will apply. All prices are in US Dollars and are F.O.B. Lewistown, PA 17044. Terms of payment are net 30 days.

MINIMUM ORDERS

We welcome all orders, therefore, we do not have a minimum order requirement. When ordering, please include your purchase order number, complete "Ship To" and "Bill To" address, catalog number, quantity, and description of product(s). Also include your name and a phone number where you can be reached should we have any questions concerning your order.

SHIPMENTS

Normal processing is within 24 hours after receipt of an order. Unless special shipping requests have been made, our trained staff will send all orders by UPS Ground service. The appropriate shipping charges (freight & insurance costs) will be added to the invoice, unless otherwise instructed by the customer.

SPECIAL PRICING

We offer special pricing for volume purchases and standing orders. These discounts apply to bonded phase extraction column purchases only. Please call a sales representative for more information on special pricing qualifications.



4101-04-02



RETURN POLICY

Our Quality Manager will handle all returns. Before returning merchandise, please call to obtain a return authorization number from the quality manager. We will need to know the reason for the return, date of purchase, purchase order number and invoice number in order to issue a return authorization number. Return merchandise must be received before a credit can be issued. Returns will not be accepted after 90 days. A restocking fee of 25% of the price paid, or a minimum of \$25.00 (whichever is greater) will be charged on all returns.

WARRANTY

All products manufactured by UCT are guaranteed against defects in materials and workmanship for a period of 90 days after shipment. UCT will replace any items that prove to be defective during this time period. The exclusive remedy requires the end user to first advise UCT of the defective product by phone or in writing and must include order number, the lot number and the shipping date.

To initiate this action, photographs of the product, including packaging and labeling of the containers, must be submitted to the UCT Representative for approval. With approval a return authorization can be initiated, and must be received within 30 days. Once the materials arrive at UCT a further inspection of the materials must be completed and accepted by our Quality Manager prior to further action of credits or replacement. UCT's total liability is limited to the replacement cost of UCT products.

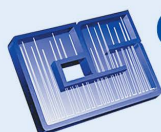
This warranty does not apply to damage resulting from misuse.

Contact Us

Phone: 215.781.9255
800.385.3153
Fax: 215.785.1226

UCT, Inc.
2731 Bartram Rd.
Bristol, PA 19007

Email: info@unitedchem.com
Web: www.unitedchem.com



**CHROMATOGRAPHIC[®]
SPECIALTIES INC.**

1-800-267-8103 • www.chromspec.com • tech@chromspec.com



FORENSICS