

# Introducing the newest GC and GC/MS Instrumentation with specifications that meet or exceed the industry leaders, at considerable savings!

Chromatographic Specialties is pleased to introduce YOUNG IN's newest lines of GC and GC/MS instrumentation to the Canadian scientific community.

With over 30 years of chromatographic manufacturing experience, YOUNG IN Chromass CO., Ltd. has continuously evolved their line of GC and GC/MS instrumentation. Their goal is to provide scientists with feature-rich, reliable analytical instrumentation at reasonable prices. **Their accumulated experience in gas chromatography combined with Chromatographic Specialties' devotion to customer satisfaction creates a one-stop solution for your chromatographic instrumentation needs.**

Their newest offering, the ChroZen GC and GC/MS systems feature substantially enhanced sensitivity and reproducibility, enabling more reliable and accurate data.



**The new ChroZen GC system** features an extended range of available detectors, including: FID, TCD,  $\mu$ TCD, NPD, PDD,  $\mu$ ECD, FPD, PFPD, PID, VUV, MS and TQ MS.

## Features

- Enhanced Intuitive 10.1" touchpad / LCD display with at-a-glance status of all components and parameters, including real time chromatogram display
- New UPC (Ultimate Pneumatic Control) to optimize flow control provides exceptional accuracy and precision (RT Repeatability SD < 0.0008 min.)
- Increased sensitivity through improved EMI shielding and advanced electronics design
- SmartFlow Kit for backflush, 2D GC or heart-cut applications
- Built-in H<sub>2</sub> detector allows for safe use of hydrogen as a carrier gas resulting in superior productivity and sensitivity

## YL-Clarity Software

YL-Clarity is a flexible, powerful and intuitive Chromatography Data Station providing easy control of the ChroZen GC and GC/MS. **Options for control and acquisition from other manufacturers GCs, HPLCs, autosamplers and accessories are available.**

- 21 CFR Part 11 Compliant with manager configured user accounts, audit trails and digital signatures
- Data Acquisition for up to four independent chromatographs and up to twelve channels
- Allows overlay of a virtually unlimited number of chromatograms including subtraction/addition
- Full management of integration, calibration, post-run functions and custom user calculations
- Fully compatible with Wiley and NIST MS libraries to automatically identify compounds
- Allows the ChroZen GC/MS to run scan mode and SIM mode simultaneously in a single chromatographic analysis

**1-800-267-8103 • [www.chromspec.com](http://www.chromspec.com) • [instrum@chromspec.com](mailto:instrum@chromspec.com)**

**The new ChroZen GC/MS** is an innovative single quadrupole mass spectrometer designed to carry out qualitative and quantitative trace level analyses for unknown or complex samples. With its standout ultra-inert ion source, it minimizes contamination to ensure optimal repeatability and sensitivity

#### Features

- UEIS (Ultra Efficiency Ion Source) with enhanced lens and pre-filters to maximize efficiency of ionization
- Six spiral multipliers increase the linear output current to enhance sensitivity (SNR 2500:1, IDL <10fg)
- Wide mass range: 1.4~1 200 amu
- Rapid scan speed: ~20,000 amu/sec
- Scan, SIM and simultaneous Scan/SIM mode
- High-capacity turbo pump: 240 L/sec standard vacuum system for fast stabilization
- Double filament provides uninterrupted and stable analyses and minimizes instrument downtime



**The ChroZen TQ GC/MS** is the right solution to achieve greater insight into samples with extremely selective and sensitive data for quantitative and qualitative information. Its structural characteristics such as 180° curved collision cell and lens-free optics eliminate the interferences of co-eluting compounds and neutrons, minimizing maintenance and simplifying method setup to maximize ease of use.

#### Features

- 180° curved collision cell
- Active focusing ion guide
- Axial ion source
- EDR (Extended Dynamic Range) detection system
- Lens-free optics
- High Capacity Turbo dual stage pump (310 L/sec)
- Multi-axis (360°) noise cancelling ion path

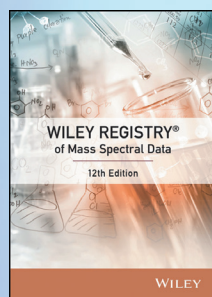


### Powerful GC/MS Library

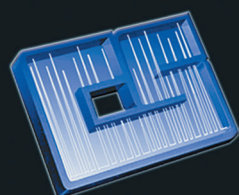
Various GC/MS libraries are available depending on your specific applications. Libraries include information on each compound's spectra, chemical structure and retention index to produce the accurate and reliable data you expect.

#### GC/MS Data

Library	Wiley Registry 12 <sup>th</sup> Edition	NIST/EPA/ NIH 2020	Wiley Registry 12 <sup>th</sup> / NIST 2020 GC/MS Total*
Spectra	817,000	350,000	1,008,000
Chemical Structures	785,000	350,000	1,056,000
Unique Compounds	668,000	306,000	843,000
Product Number	W9781119171027	W9781119750291	W9781119750338



\* Total GC/MS counts for WR12/N20 found from total WR12 plus N20 minus overlap.



## CHROMATOGRAPHIC SPECIALTIES INC.

300 Laurier Blvd., Brockville, ON K6V 5W1  
Toll Free: 800-267-8103 Fax: 613-342-1144  
instrum@chromspec.com www.chromspec.com

